



Sponsored by:



Hashtag:  
**#IgniteSpatial**





**Hashtag:**  
**#IgniteSpatial**

## Agenda

- 10 Ignite Lightning Talks
  - 20 Slides \* 15 Seconds = 5 Minutes
- Intermission & Ignite Karaoke
- 9 More Ignite Lightning Talks
- Pizza Social



**Hashtag:**  
**#IgniteSpatial**

## Today, You Will Experience...

- 20 Lightning Talks
- Ignite Karaoke
  - 1 brave soul (it could be you) presenting mystery slides
- Questions? Good!
  - Just not during the talks
  - Seek out speakers during the intermission or pizza social for direct engagement



...and now, a word  
about our sponsors



Hashtag:  
#IgniteSpatial





- A Forum for Technology
- Fostering Relationships
- Professional Development
- Geospatial and IT Issues

Covering the states of Connecticut, Maine, Massachusetts, New Hampshire, Rhode Island and Vermont

[www.neurisa.org](http://www.neurisa.org)

Providing comprehensive, state-of-the-art Geographic Information System consulting services and solutions since 1991



...what hasn't changed in 20 years is our commitment to innovation and service.



[www.appgeo.com](http://www.appgeo.com)



# Connecticut GIS User to User Network

A voluntary association of GIS Users

- [Home](#)
- [Meetings](#)
- [About](#) ▶
- [Committees](#)
- [Listserve](#)
- [GIS Newsletter](#)
- [Resources](#) ▶

## WELCOME!

The Connecticut GIS User to User Network is a voluntary association of individuals and organizations that use GIS-based technologies and data in their day-to-day operations. The Network's purpose is to connect users through workshops, meetings and the Internet to share ideas, to learn about GIS activities, to explore collaborative opportunities and to discover information resources - all of which will promote a dynamic and innovative community of Connecticut GIS users.

The Network is not affiliated with commercial software, data or service providers. Membership is free and is open to all.

## NEXT MEETING

To be determined

### Census: GIS Data by the Numbers

June 10, 2011  
9 to Noon  
University of Connecticut Hartford Campus

[Details and more Information and Materials including Presentations and Handouts](#)

Page Last Modified: June 16, 2011

[Back to Home](#) | [Bylaws](#) | [Contact Us](#)

Copyright 2010. All Rights Reserved. Connecticut GIS User to User Network.

*This website is hosted by the Center for Landuse Education and Research, Department of Extension, College of Ag and Natural Resources at the University of Connecticut.*



# ctgis.uconn.edu



- HOME
- MAYOR
- CITY COUNCIL
- GOVERNMENT
- BUSINESS
- VISITORS
- SEARCH
- CONTACT US
- PARKING BAN INFO

Hartford welcomes World Youth Peace Summit Ju

City of Hartford  
550 Main Street  
Hartford, CT 06103  
(860) 757-9311



**311** REQUEST CITY SERVICES



- [Hartford 375 Events](#)
- [One City One Plan](#)
- [State of the City Address](#)
- [GreenUp Hartford](#)
- [Mayor's Proposed Budget](#)

**Press Releases**

- Mon June 13 2011**  
Arrest made in Jarrell Warmington Homicide Investigation [News Statement](#)
- Mon June 13 2011**  
Mayor and Police Chief on the Beat through Hartford Neighborhoods [News Statement](#)
- Fri June 10 2011** [more](#)

**Searches**

Search Hartford.gov

Select a Department

Select a Service

Select a Report/Document

Select an Online Service

Select a Popular Page



**Mayor Pedro E. Segarra Welcomes You to the City of Hartford!**

- Mayor's Welcome [English](#) [Spanish](#)
- [City Government Working for You](#)

Follow us on:

**Attractions and Events**

- City Sponsored Events
- Healthy Hartford Events
- Library Events
- Office of Cultural Affairs
- CT Convention Center
- CT Expo Center
- CT Old State House
- CT Science Center
- Discount Tickets
- Downtown Dining Guide
- Front Street District
- Greater Hartford Arts

Ignite Spatial Hartford is the direct result of a lot of hard work by the City of Hartford's Randi Pickford.

Thank you, Randi!!!

www.hartford.gov



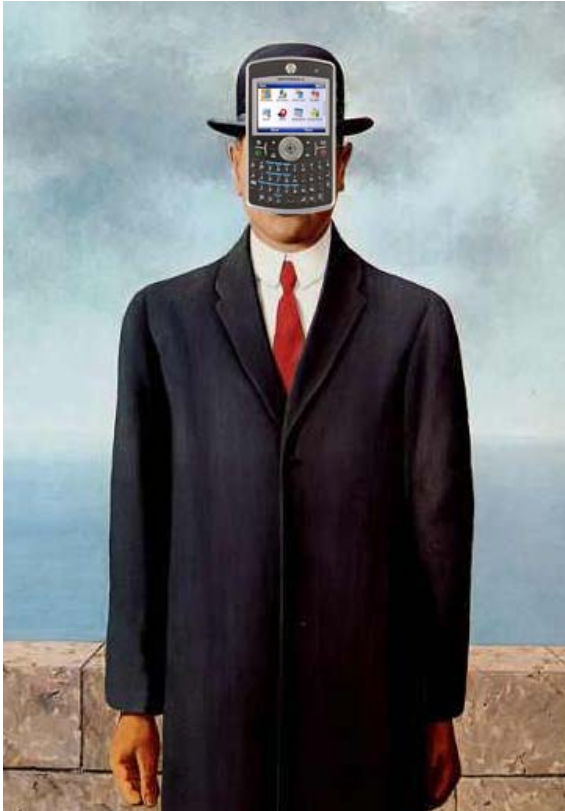
# Mike Olkin

**GIS Administrator  
Town of Amherst, MA**



Mobile Spatial Technology profoundly impacts us...

at work & at play.



[http://www.wmexperts.com/articles/editorials/smartphones\\_and\\_identity\\_you\\_a.html](http://www.wmexperts.com/articles/editorials/smartphones_and_identity_you_a.html)



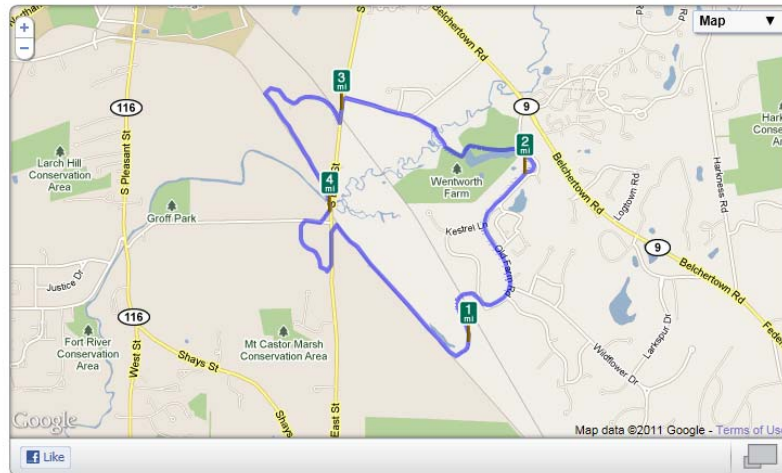
Runner in the Rain: <http://dbeckerman.wordpress.com/>

It's all spatial.

Case Study: Me

At Play: Running.

At Work: GIS.



People, Have You Heard?

## At Play: Running.



I'm not a  
high-tech  
runner

Running Log?  
What's that?

I just like to run.



Caveman Lawyer Runner

Photo by Jim Plumb @

<http://www.flickr.com/photos/67864216@N00/316074944/>

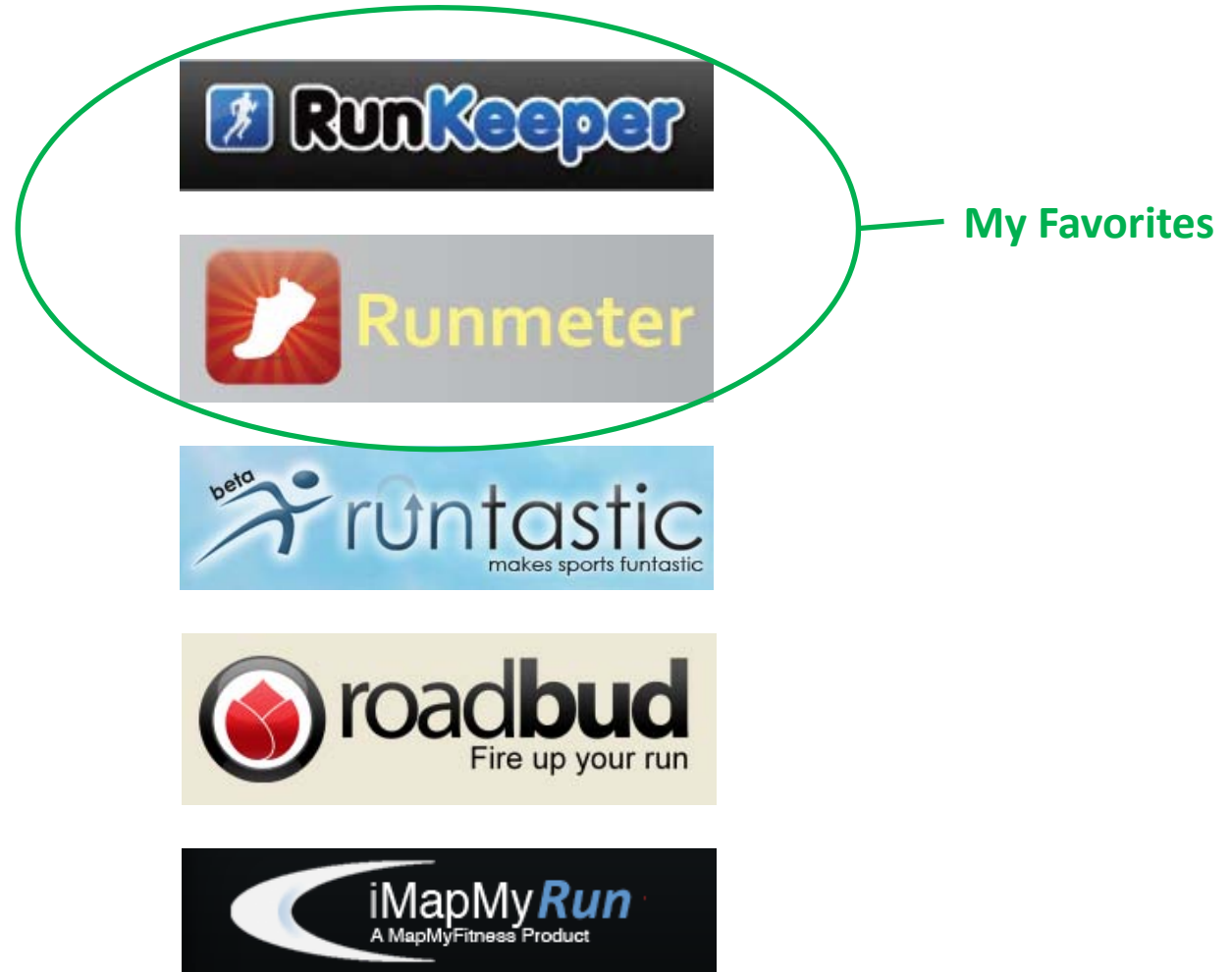
# Two years ago I got an iPhone.

Got an armband soon after so I could run  
& listen to tunes & podcasts



\*my home-crafted  
ear buds that don't  
pop out of my ears  
when I run!

I like to map stuff.  
I found that these apps can map my route...



...and motivate me to do more

Time / Pace / Distance audio updates at set intervals

Automated running log & fitness graphing

Social Network Integration



Mike, get your slow feet home now & help your wife get the kids ready for school. I'll post this sorry excuse for a run to Facebook & keep a permanent record of it.

# Result

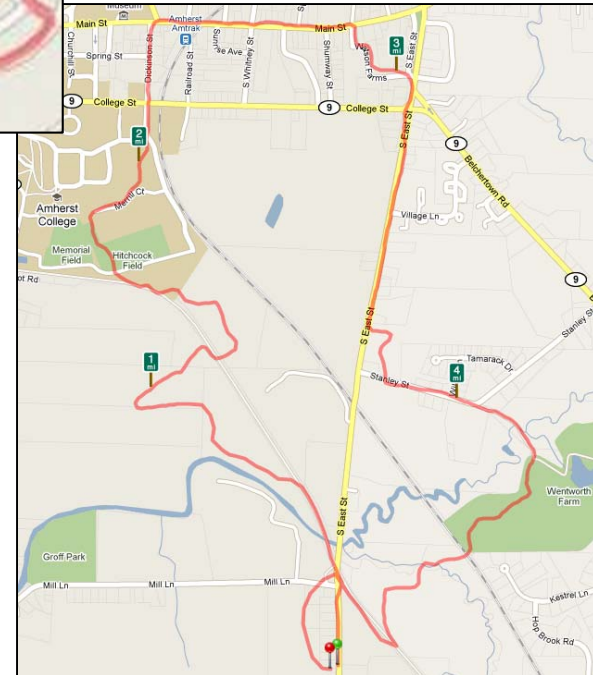
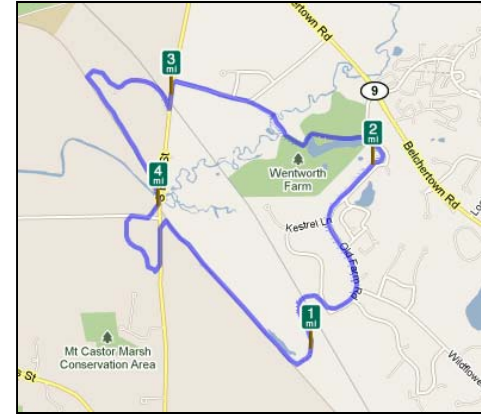
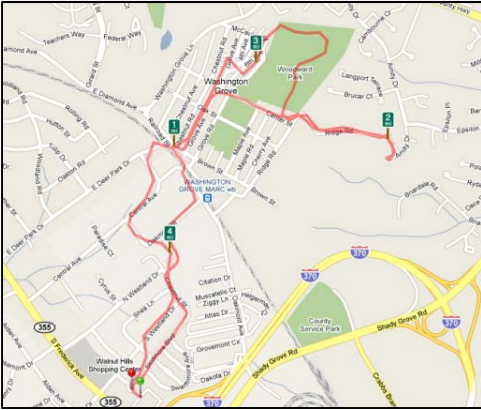
I've confirmed that I'm slower than I was 20 years ago. 😞  
(but I'm working on it)

My pace varies greatly when my mind wanders.

I'm now motivated to run faster & further, which feels great.

I've become a human pen to my Facebook friends.

The running routes are fun to look at, too.



# At Work: GIS.

- I used to despise mobile spatial/GIS technology
  - Clunky interfaces
  - Never mastered use of the stylus
  - Clumsy sync routines
  - Under-utilized by field crews



WOW! PAINT on Windows CE!!!

# Does Mobile Spatial Technology *Really* Work?

- 5 Years ago: **NO**



I'm not as cool as this guy.

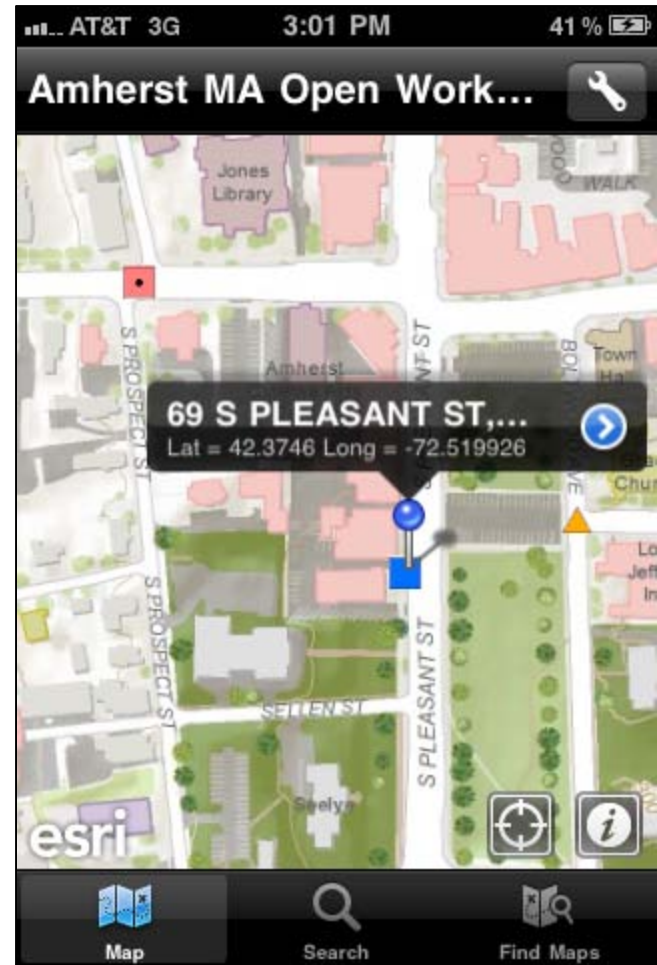
You'll find him at <http://www.flickr.com/photos/29881930@N00/2086642192>



Image from the Facebook  
"I Hate Toughbooks" group. **Exactly.**

# Does Mobile Spatial Technology *Really* Work?

- Right Now: **YES.**
  - My Map.
  - My Live Data.
  - No Syncing.
  - App Development Optional.



Amherst Open Work Orders Map  
on the ArcGIS iOS App

# What has made the difference?

- Apple, Google & Microsoft have learned how to make mobile GUIs that are easy to use
- Data Plans
- Bandwidth-Optimized Tiled Map Services





Sponsored by:



Hashtag:  
**#IgniteSpatial**

