



# School-Aged Kids... Budget Balancing Kryptonite (EVIL?)



Connecticut GIS User to User Network  
A voluntary association of GIS Users



Gary Anderson

# School-Aged Kids...

Budget Balancing Kryptonite (EVIL)?



Or Not So Bad?



# The Case For...

## Budget Balancing Kryptonite

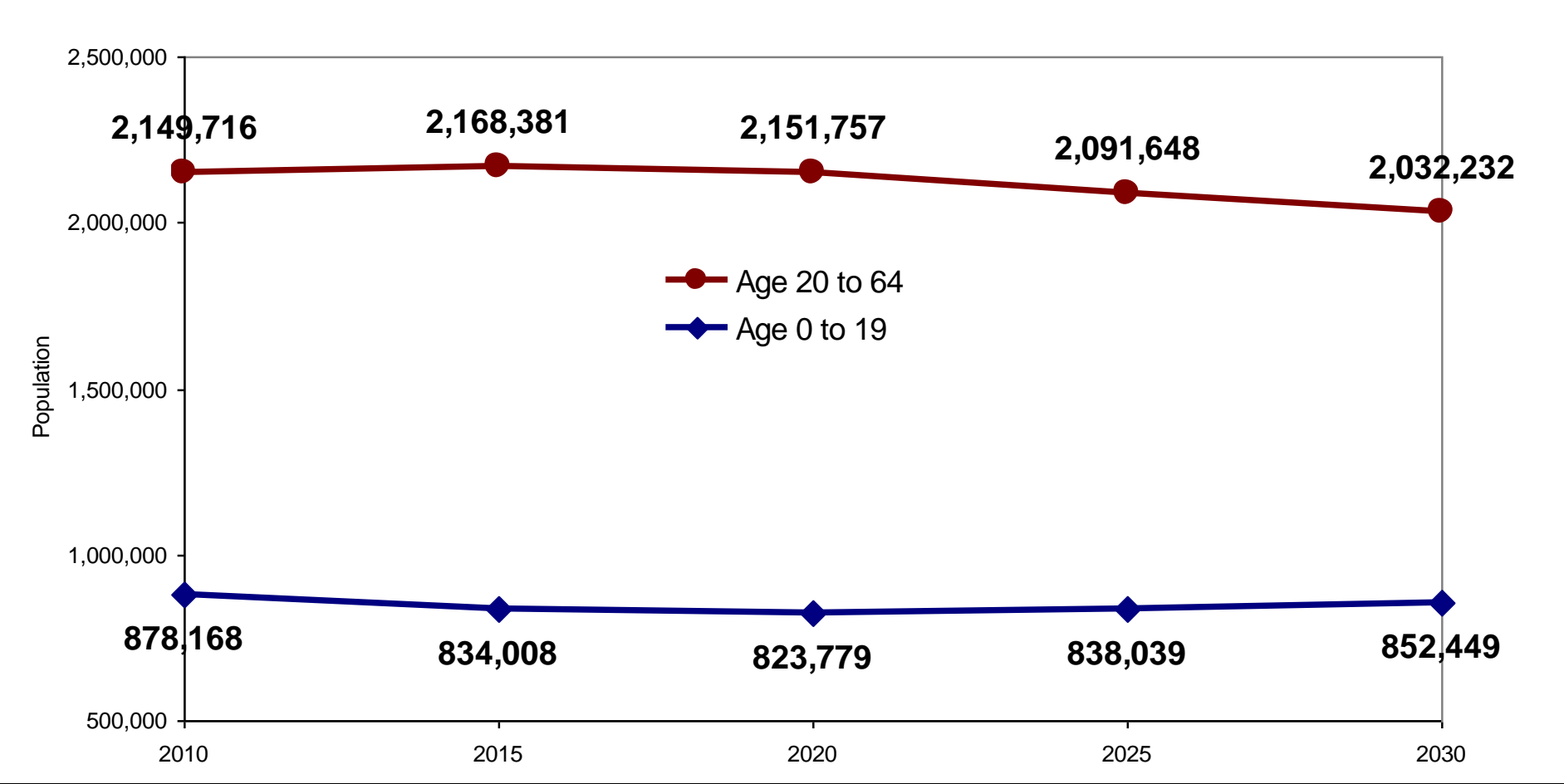


**“They cost a lot of money to educate and Connecticut is financially strapped as it is! Don’t build any more housing because it will attract families with kids!!”**



# Working Population Falling

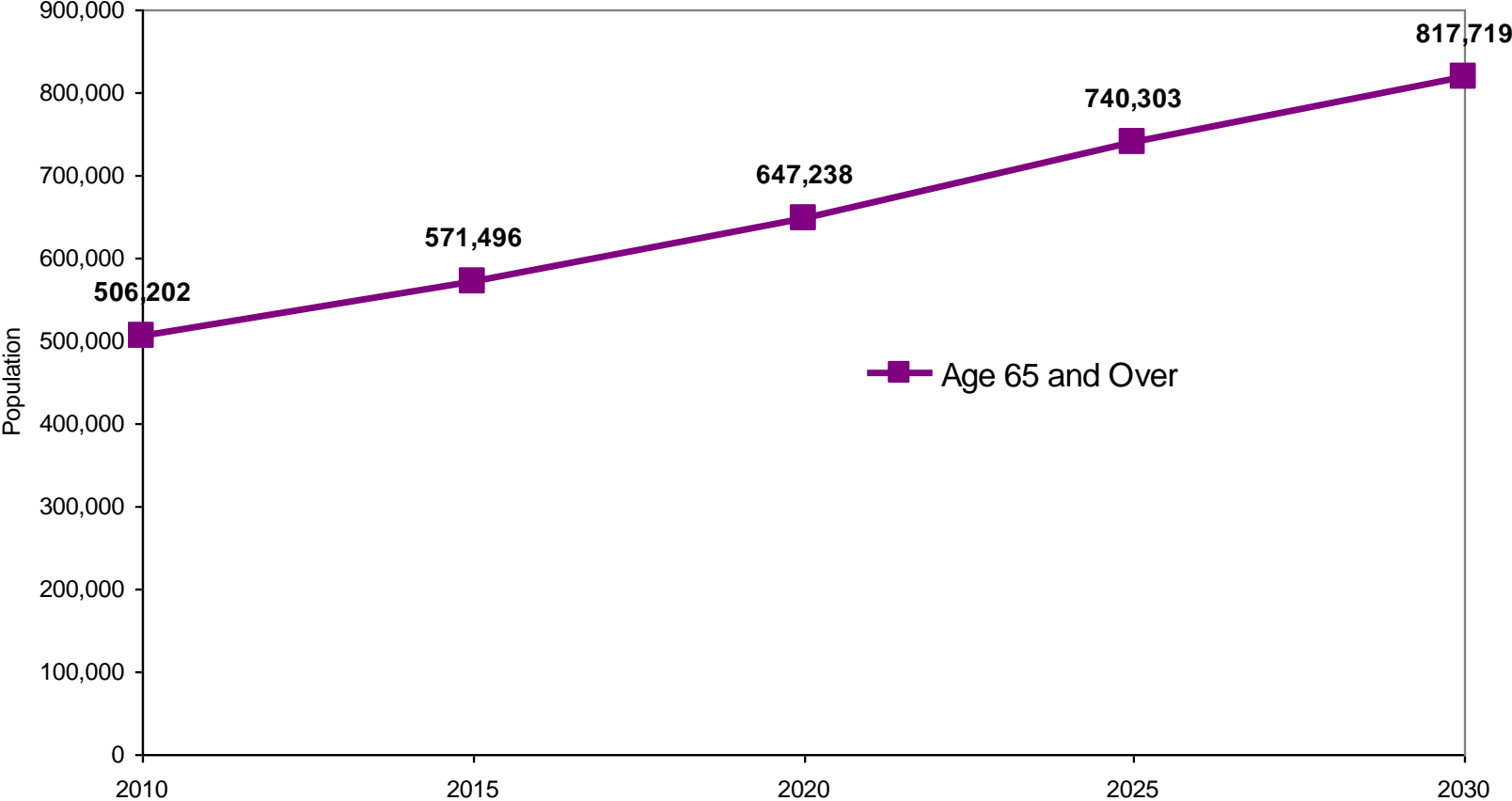
Connecticut Population by Age  
2000 to 2030



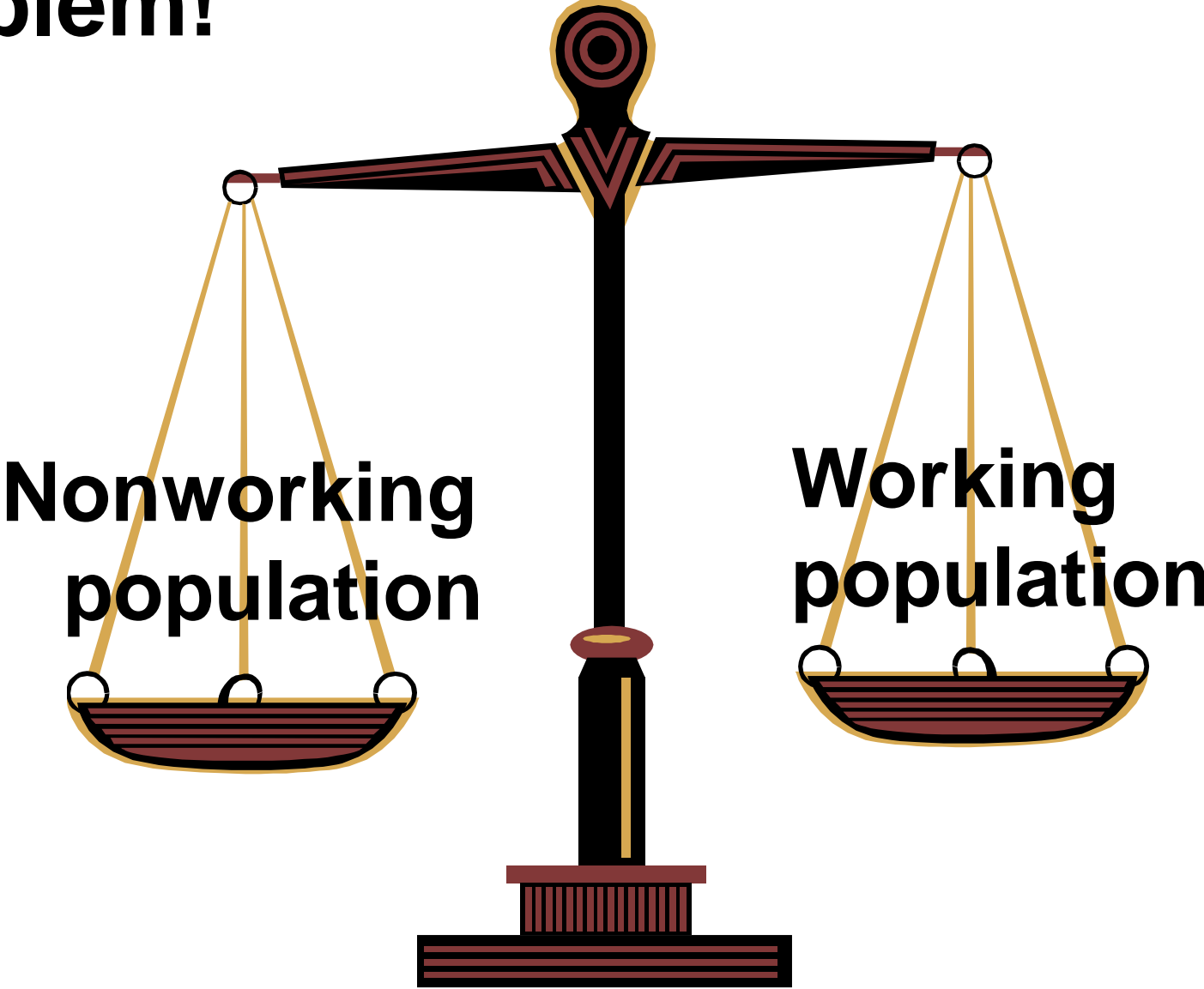
# School Population Falling

# Senior Population Exploding

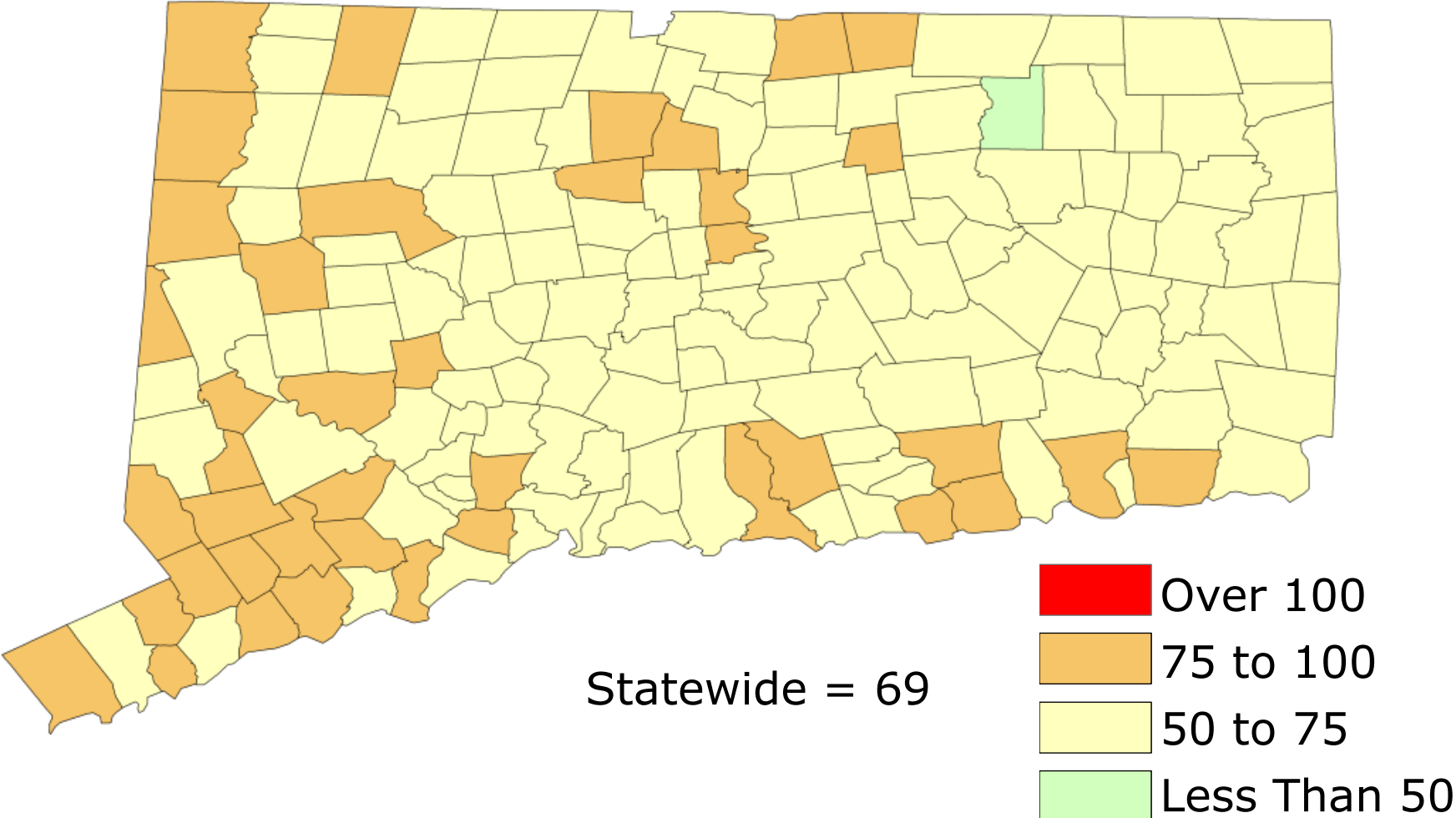
Connecticut Population by Age  
2000 to 2030



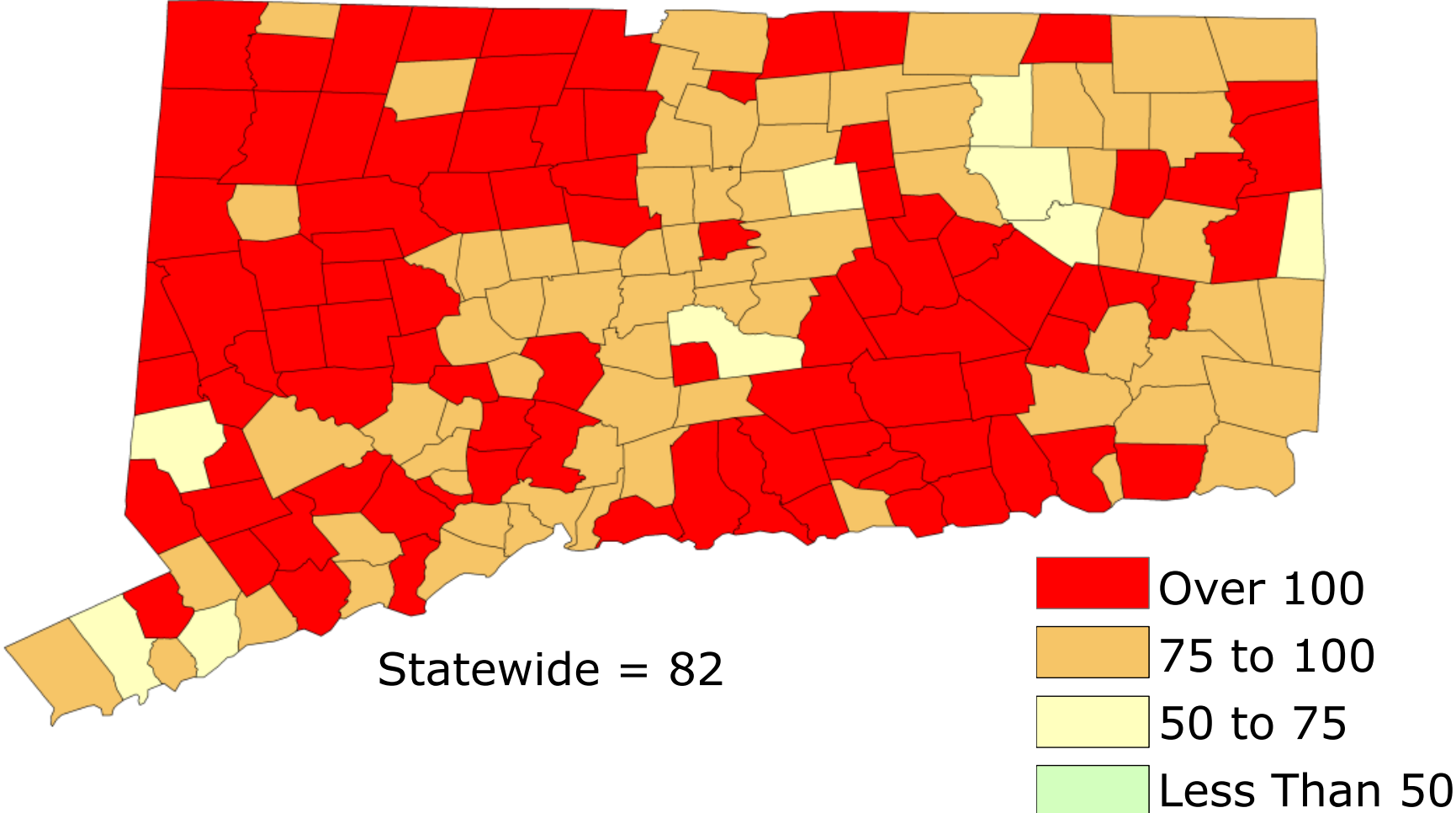
# Problem!



# Number of Nonworkers for every worker: 2010

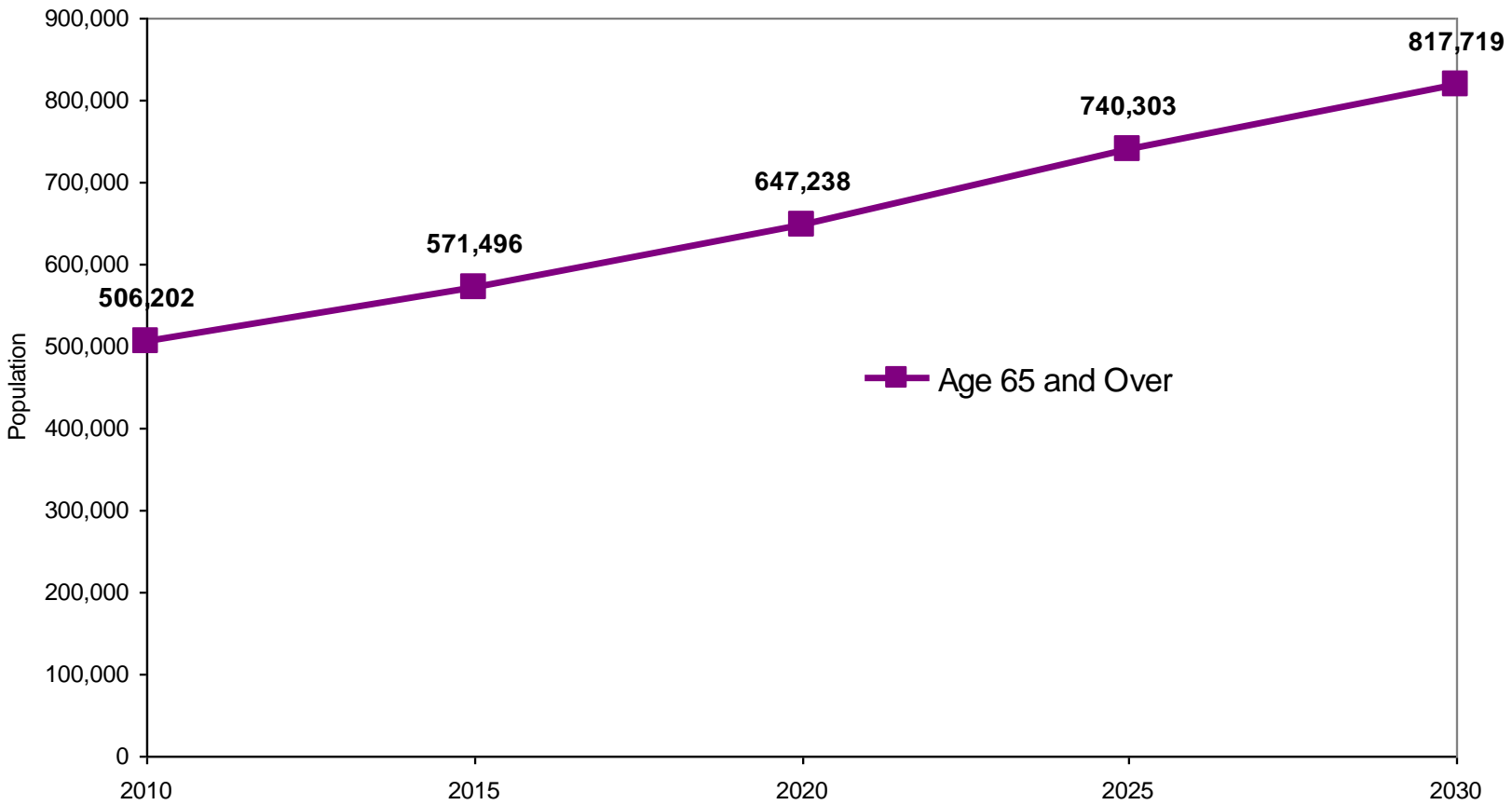


# Number of Nonworkers for every worker: 2030

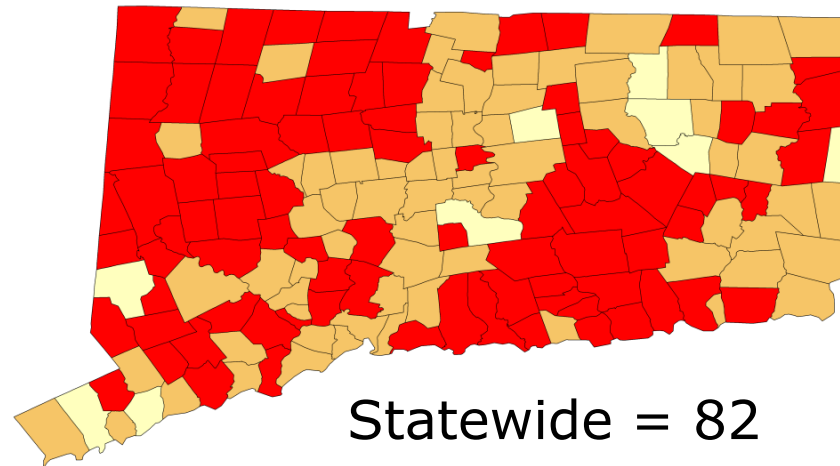


# Because of This...

Connecticut Population by Age  
2000 to 2030



# We will be competing for workers



## School-Aged Kids help by...

# Bringing Workers With Them!



# **A Well-Educated Workforce Keeps Jobs Here and Brings More**



# These Workers Buy Stuff:

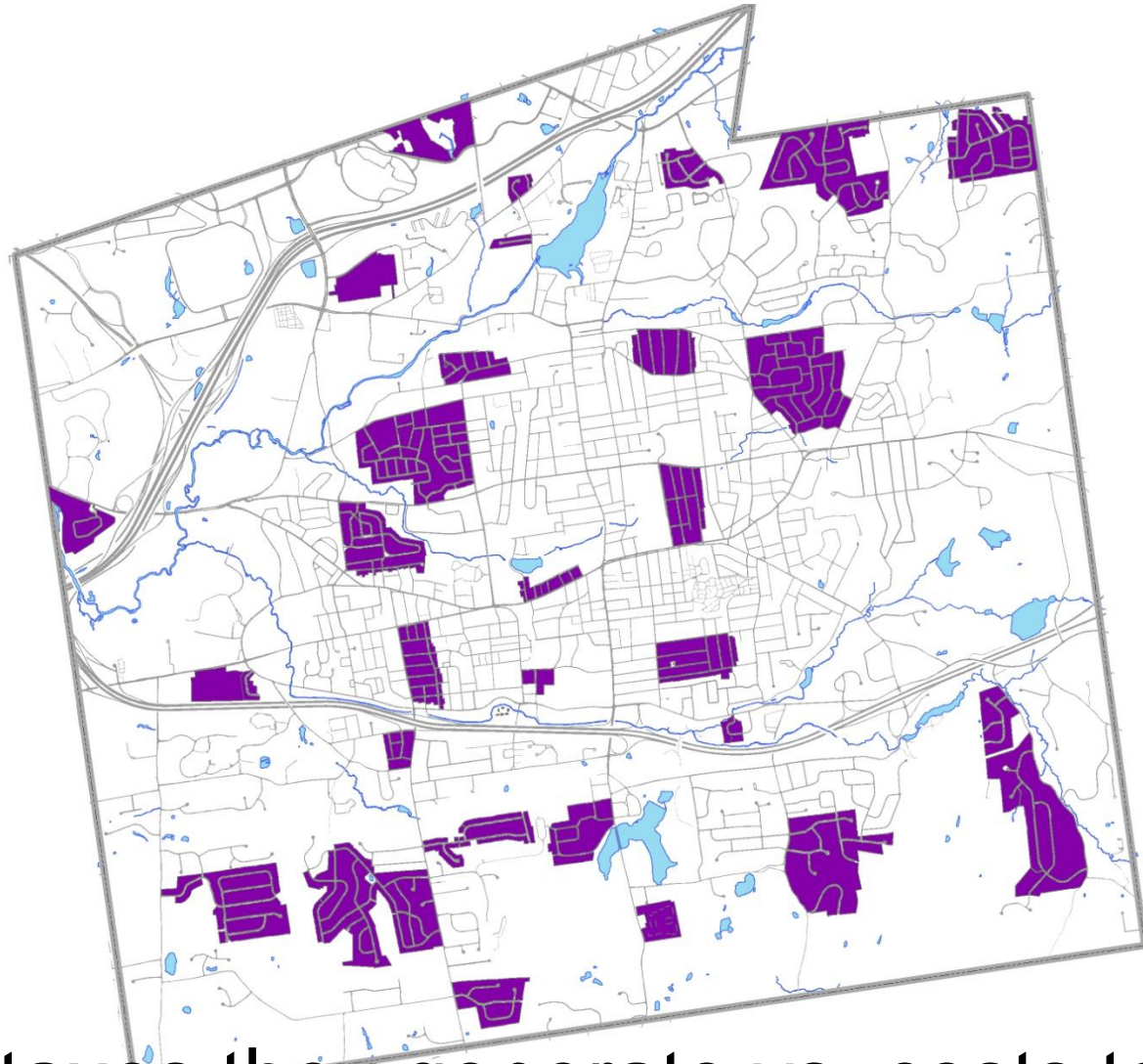


# And Pay Taxes

# **So...what about cities and towns?**

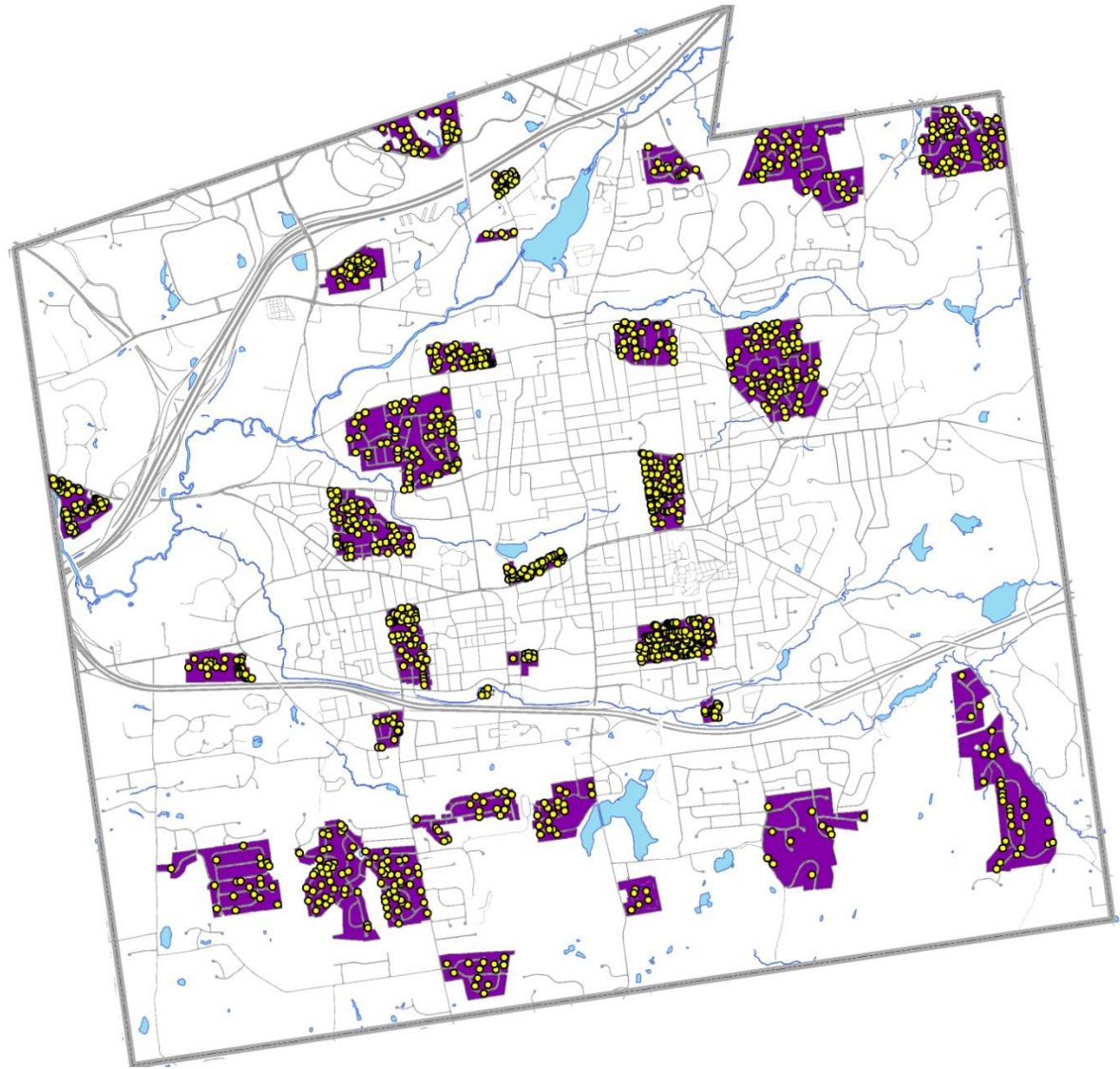
- Manchester, CT Development Impact Report 2010 (Updated from 2003)
- Do Housing Developments Pay for the Associated Increase in School Costs?

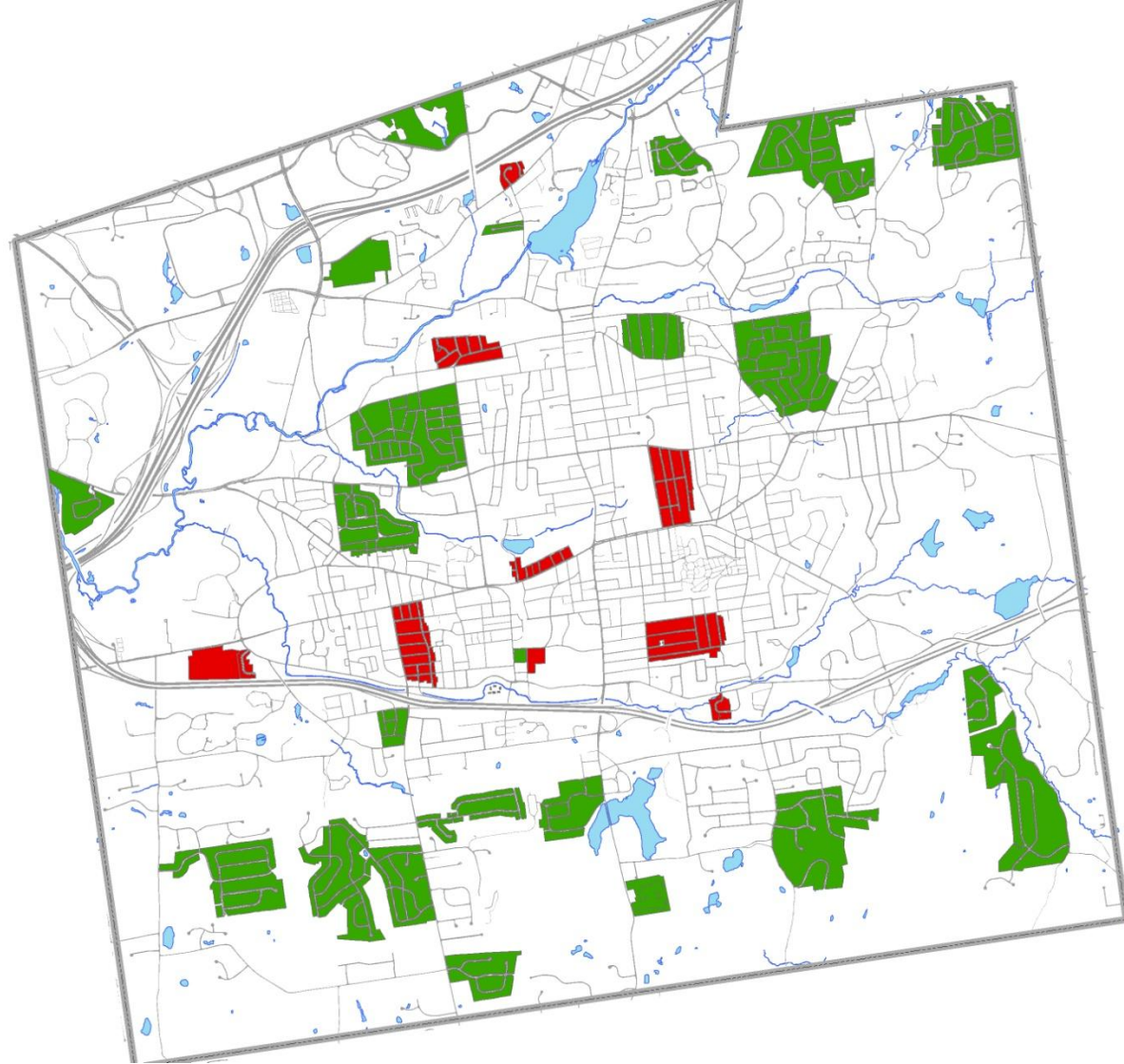
# 33 Different Housing Developments



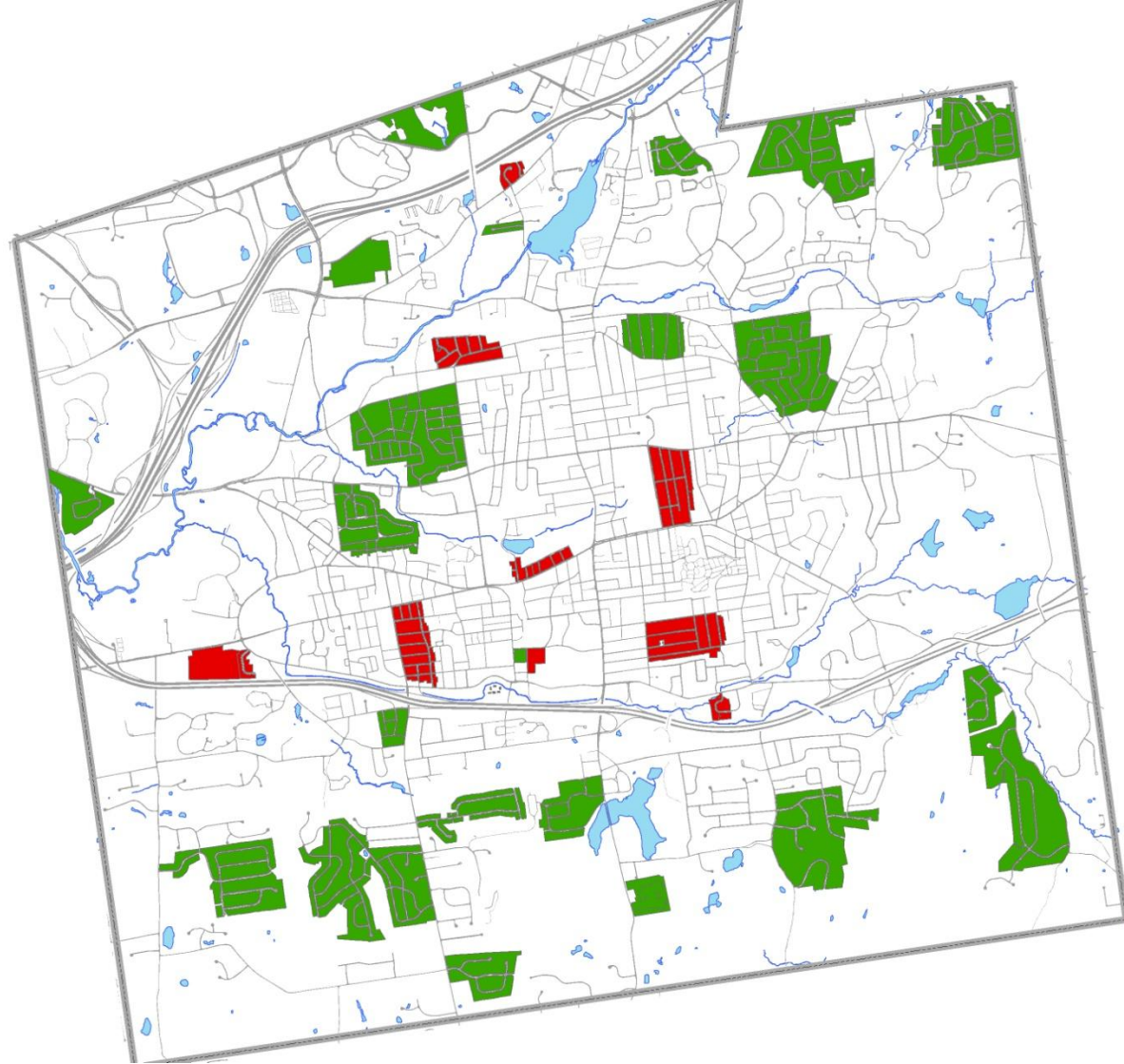
Property taxes they generate vs. costs to educate the school kids who live there



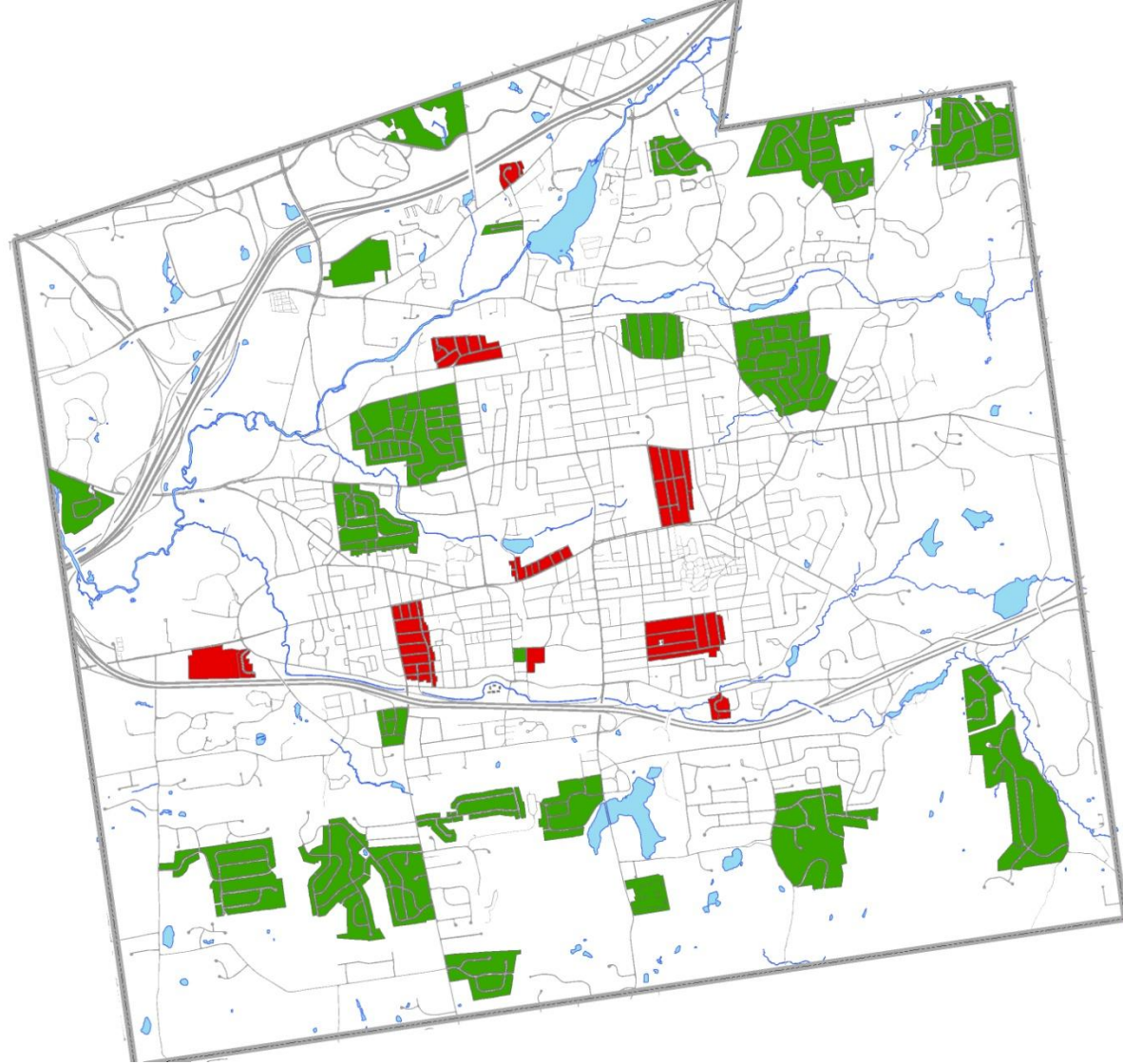




- **10 Red- School Costs > Property Taxes**



- **23 Green- Property Taxes > School Costs**



- In 23 out of 33 neighborhoods property taxes covered the cost of the associated school kids
- Total Net: +\$1,018,758

# **VERDICT?**

- **Declining K-12 Population**
- **Need for skilled and educated workers**
- **Skyrocketing 65+ Population**
- **Competition for working population**
- **Net gain in local property taxes**
- **Fun/cuteness factor**

**NOT SO BAD!!**





# School-Aged Kids... Budget Balancing Kryptonite (EVIL?)



Connecticut GIS User to User Network  
A voluntary association of GIS Users



Gary Anderson