

Esri, GIS, and the Cloud

Providing New Opportunities

Matt Davis

mdavis@esri.com



Cloud Computing - Wikipedia

- Cloud computing is Internet-based computing, whereby shared resources, software, and information are provided to computers and other devices on demand, like the electricity grid...
- ... Details are abstracted from the users, who no longer have need for expertise in, or control over, the technology infrastructure "in the cloud" that supports them...
- ... Cloud computing describes a new supplement, consumption, and delivery model for IT services based on the Internet, and it typically involves over-the-Internet provision of dynamically scalable and often virtualized resources...

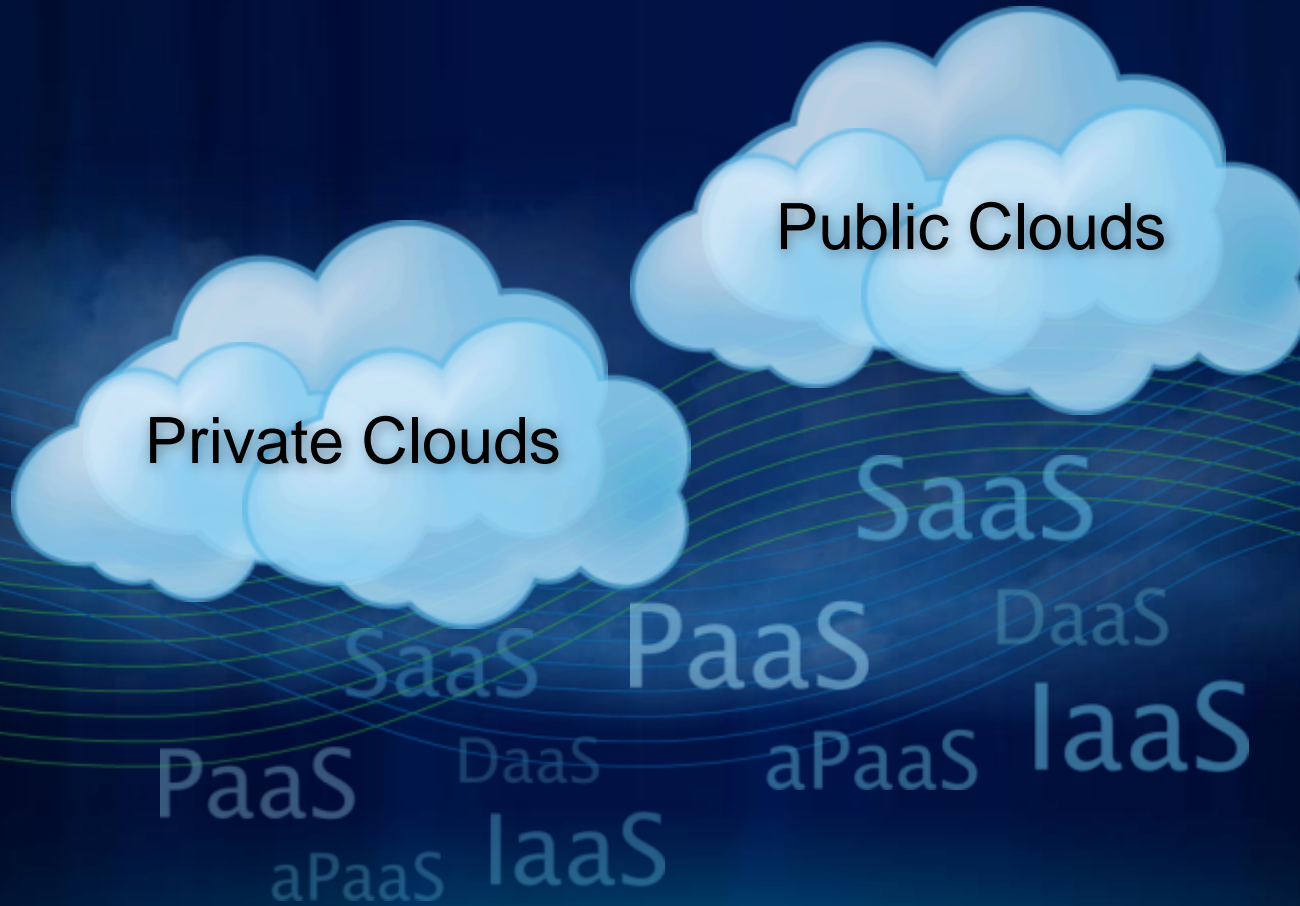
Lots of hype

Gartner Hype Cycle for Cloud Computing, 2010

39 Cloud topics of which
75% are either rising or
at peak of hype

“Cloud computing remains the latest, most
hyped concept in IT”

Many clouds, many services...



What are the different services?

Software as
a Service
(SaaS)

End-user applications delivered as a service rather than on-premises software

Platform as
a Service
(PaaS)

Application platform or middleware on which applications can be built

Infrastructure as
a Service
(IaaS)

Compute, storage, or other IT infrastructure as a service

Software + Services
(S+S)

Leveraging hosted services with locally installed software applications

New? Business Models

- **Perpetual**
Up front purchase plus annual maintenance. A traditional model for buying software licenses and ongoing maintenance.
- **Subscription**
One fee for the right to use service for a finite period of time. Similar to how you subscribe to a magazine or newspaper.
- **Consumption**
Pay-as-you-go for what you consume. Similar to how you buy electric and gas service from a utility.



Security and SLAs are always a factor

Physical Security
Cyber Security
Government Regulations
Geographic Location
SaaS 70 Auditing

It's not an all or nothing proposition

Clear



Partly Cloudy



Cloudy



Private and community clouds are very interesting



Private Clouds

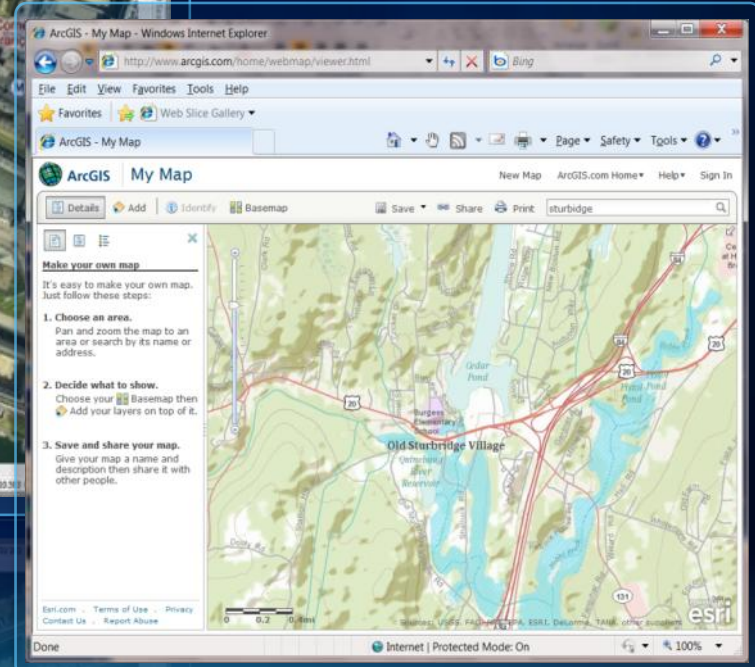
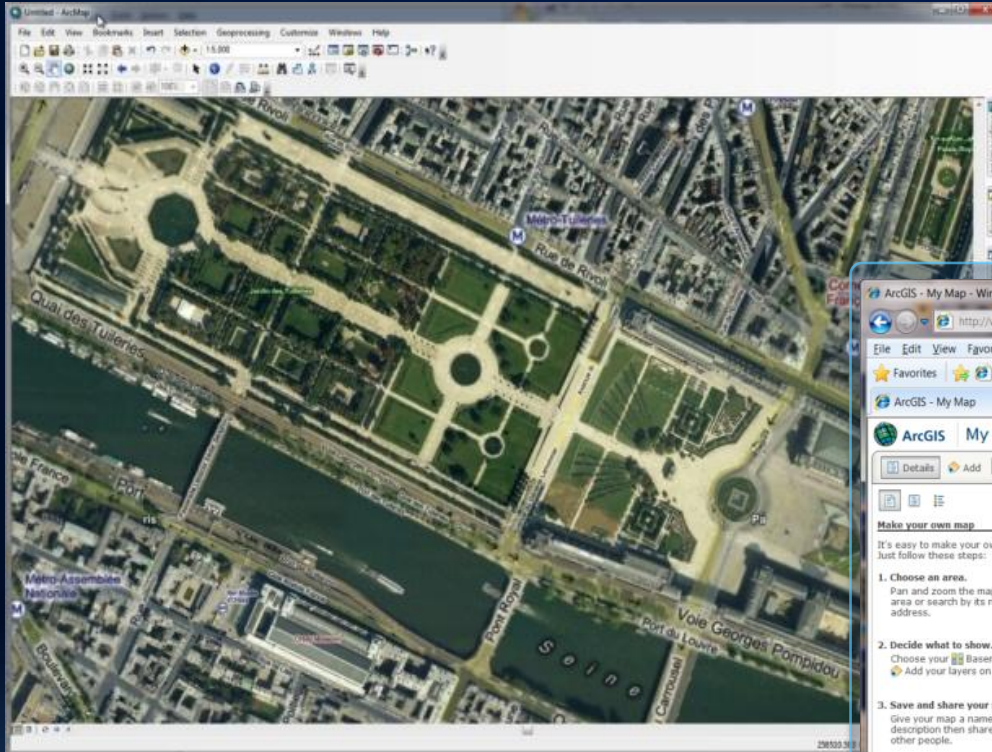
Community Clouds

The anatomy of GIS



Things that used to cost money are now free

Map Services
Geocoding
Web Apps w/Mash-ups
Storage & Sharing

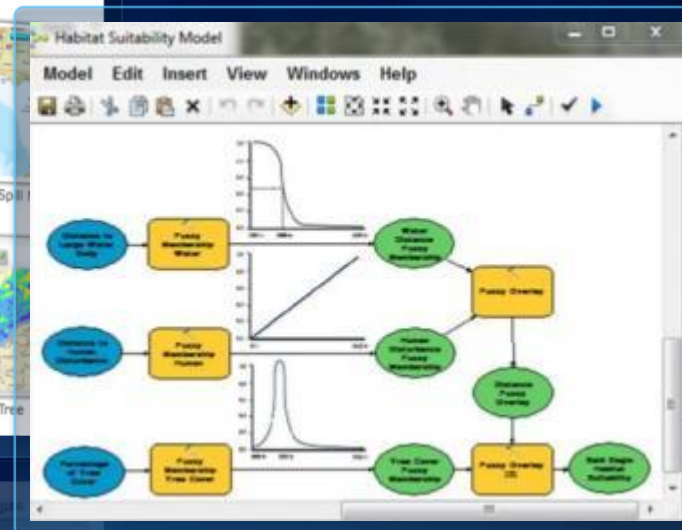


Things that used to be hard to find are now easier

Apps / Code



Analytic Models



ArcGIS.com Search for Government Services

Trash pick-up

Government Service Locator - Windows Internet Explorer

http://coolapps.cybertech.com/App

File Edit View Favorites Tools Help

Government Service Locator

Government Service Locator

Government Service Locator ver 1.0

Government Service Locator is an application that exploits some of the advanced features of ArcGIS 10. This application allows users to view information regarding services and schedules of various services like garbage pickup, recycling pickup, leaf pickup and street cleanup by entering a citizen's residential address. Once an address is entered, all services within the area would be displayed by the app in separate interactive panels. Citizens can scroll through these panels and view contact information for each service, website links and schedule. Comments regarding each government service or office can be viewed or posted by citizens. Updates can also be subscribed for via Twitter or e-mail.

Other than schedules, users can also get details on the nearest police stations, libraries and post offices. The distance to find these offices around the input address are configurable.

Find Services Near Me

Garbage Pickup

Recycling Pickup

Street Cleanup

* Please note that data displayed in the sample application is available only for Washington DC.

	Flex	SliverLight	JavaScript
Live Demo	✓	✓	✓
Downloads	✓	✓	✓
Video	⚠	✓	✓
Number of Downloads	50	322	84

Copyright © 2005 - 2010 CyberTech Systems And Software Ltd. All rights reserved.

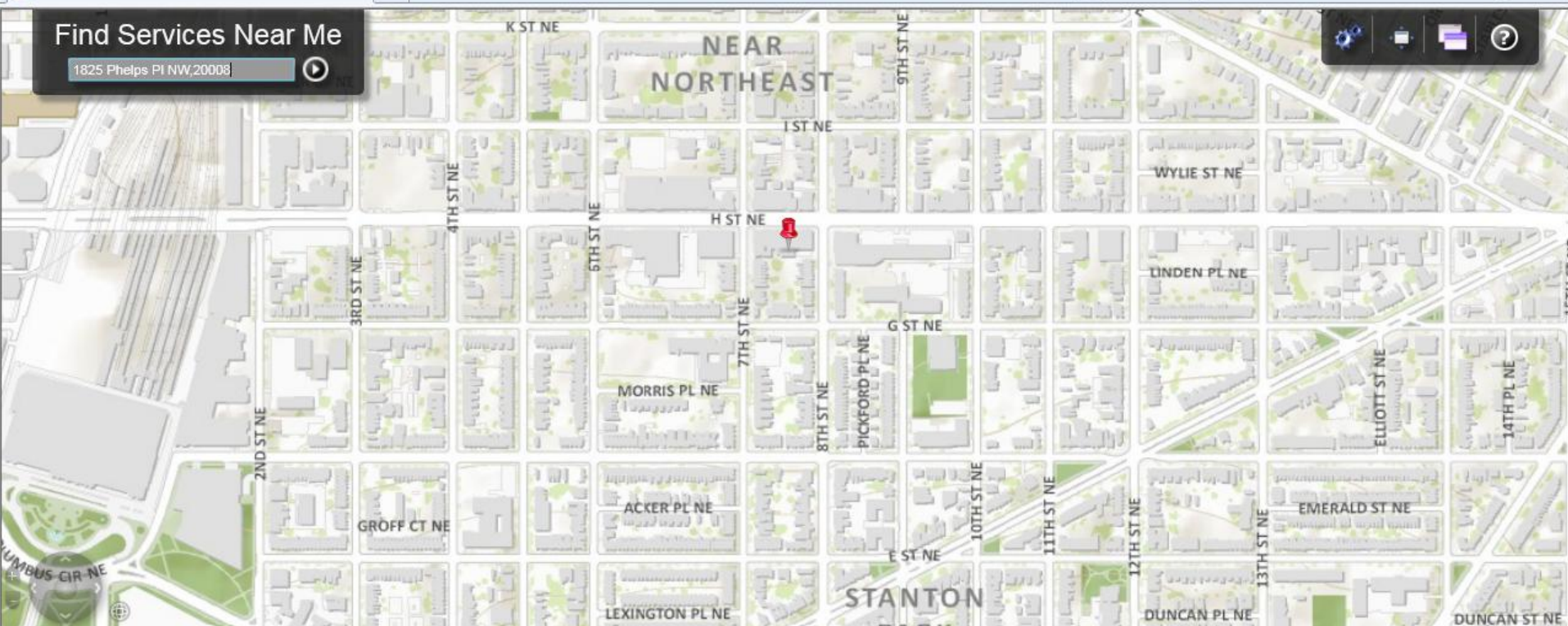
Internet | Protected Mode: On

100%

Viewer application code available freely

Find Services Near Me

1825 Phelps PI NW,20008



Garbage Pickup

Monday, Thursday



Contact: DPW
2000 14th Street, NW, 6th Floor Washington, DC 20009
Phone: (202) 673-6833 Fax: (202) 671-0642
Website | Email

Show pickup areas on map

Mo	Tu	We	Th	Fr	Sa	Su
----	----	----	----	----	----	----



Recycling Pickup

Thursday



Contact: DPW
2000 14th Street, NW, 6th Floor Washington, DC 20009
Phone: (202) 673-6833 Fax: (202) 671-0642
Website | Email

Show pickup areas on map

Mo	Tu	We	Th	Fr	Sa	Su
----	----	----	----	----	----	----



Street Cleanup

Saturday



Contact: DPW
2000 14th Street, NW, 6th Floor Washington, DC 20009
Phone: (202) 673-6833 Fax: (202) 671-0642
Website | Email

Show street on map

Week 1	Week 2	Week 3	Week 4
--------	--------	--------	--------

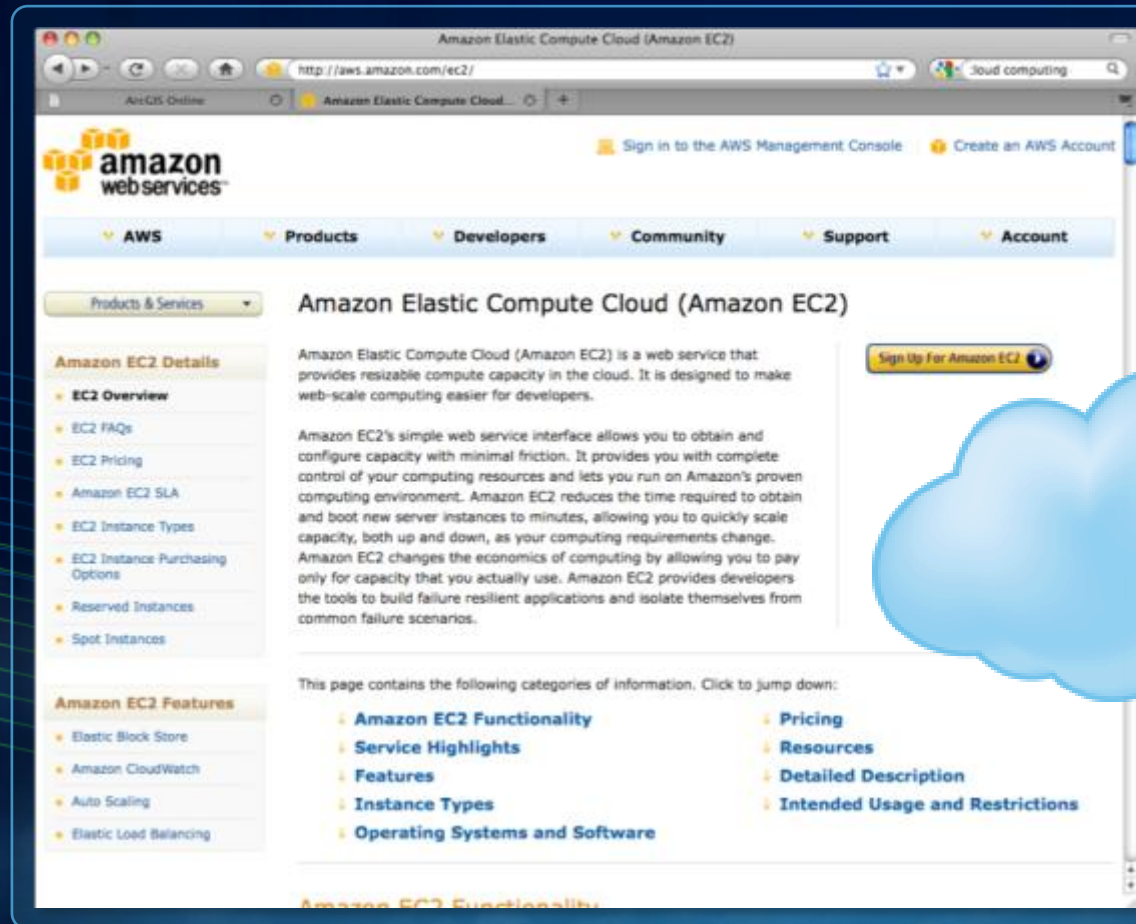


Leaf Pickup

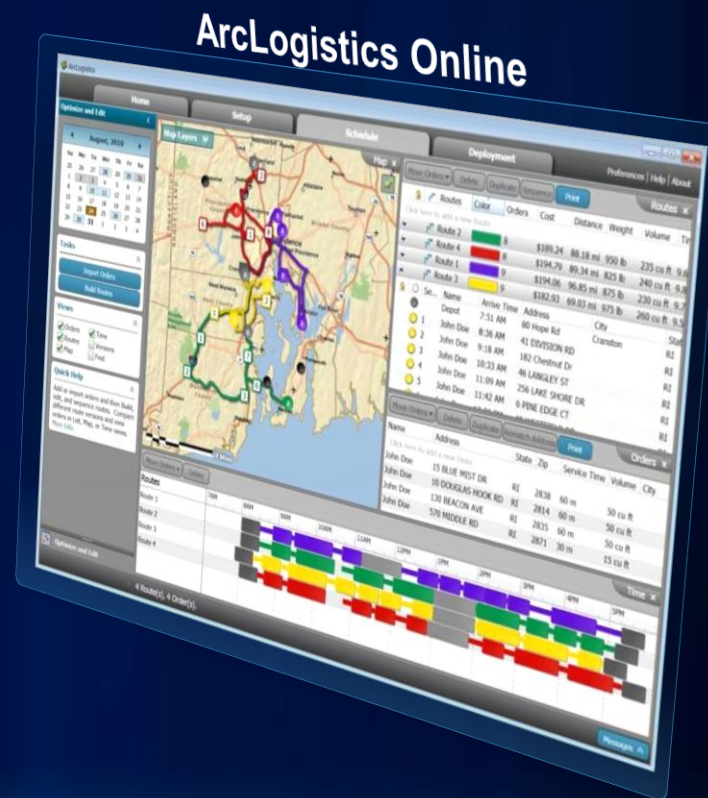
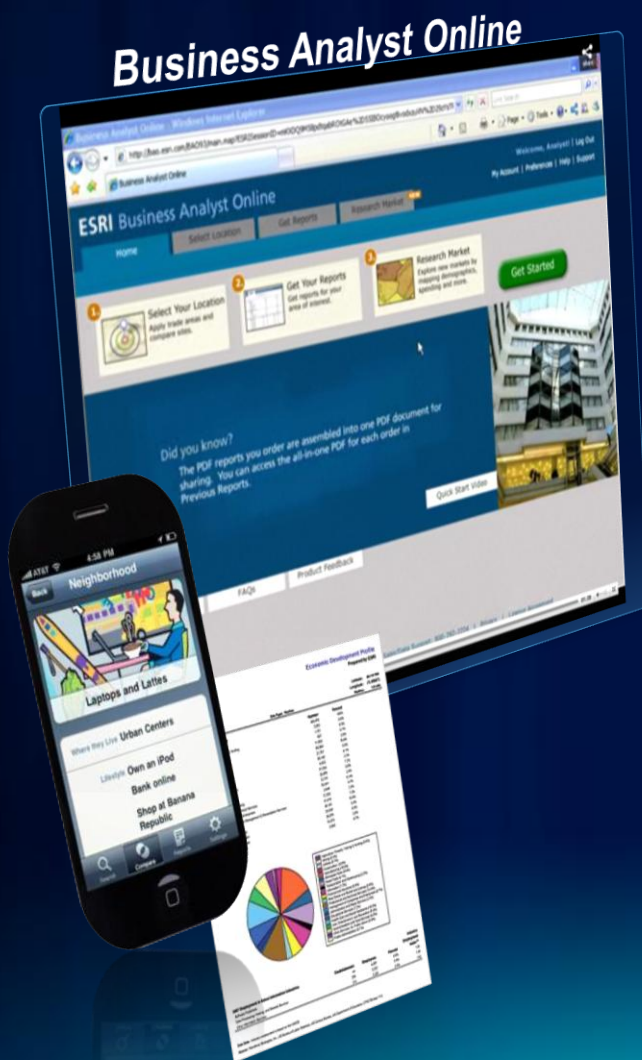
Contact: DPW
2000 14th Street, NW, 6th Floor Washington, DC 20009
Phone: (202) 673-6833 Fax: (202) 671-0642
Website | Email

Pass	Color	From Date	To Date
Pass 1	Green	11/2/2009	11/11/2009

Things that used to be complex are now easier



Things that used to take development are now ready to use



Creating new opportunities

CitySourced



Esri's evolving GIS platform



Powering the GeoWeb of the future



Thank You



Community Basemap Information

Follow-up details discussed during the presentation Q&A

- **ArcGIS Resource Center - Community Basemap program details**
 - <http://resources.arcgis.com/content/community-basemap/about>
- **Free Community Basemap Seminar @ NEARC**
 - <http://www.northeastarc.org/2010/html/activities.shtml#communitymaps>
- **Paid 3 day online training workshop**
 - http://training.esri.com/gateway/index.cfm?fa=catalog.courseDetail&CourseID=50123474_10.x