



New England URISA Day 2010

State of the States Panel

October 18, 2010

Our Panelists

- ***Shane White***
 - RIGIS Coordinator, RI Statewide Planning
- ***Michael Varney***
 - Project Manager, CT Department of Information Technology
- ***Christian Jacqz***
 - *Director, MassGIS*
- ***Dave Brotzman***
 - *Executive Director, VT Center for Geographic Information*
- ***Ken Gallager***
 - *Principal Planner, NH Office of Energy and Planning, GIS and GRANIT Program*
- ***Dan Walters***
 - *Maine Liaison, U.S. Geological Survey*

Session Outline

- Updates from the States
 - Highlights from 2010
 - Noteworthy project
 - Looking Ahead
 - Additional Information
- Discussion
 - How are you surviving and maintaining relevancy?
 - What challenges that are not currently being met, could be realized through regional cooperation?
 - And audience questions...

2010 Highlights

- GIS Clearinghouse
- CT ECO
- Broadband Mapping
- CRCOG Orthoimagery
- GISCO Outreach and Data Working Groups

Broadband Mapping Project:

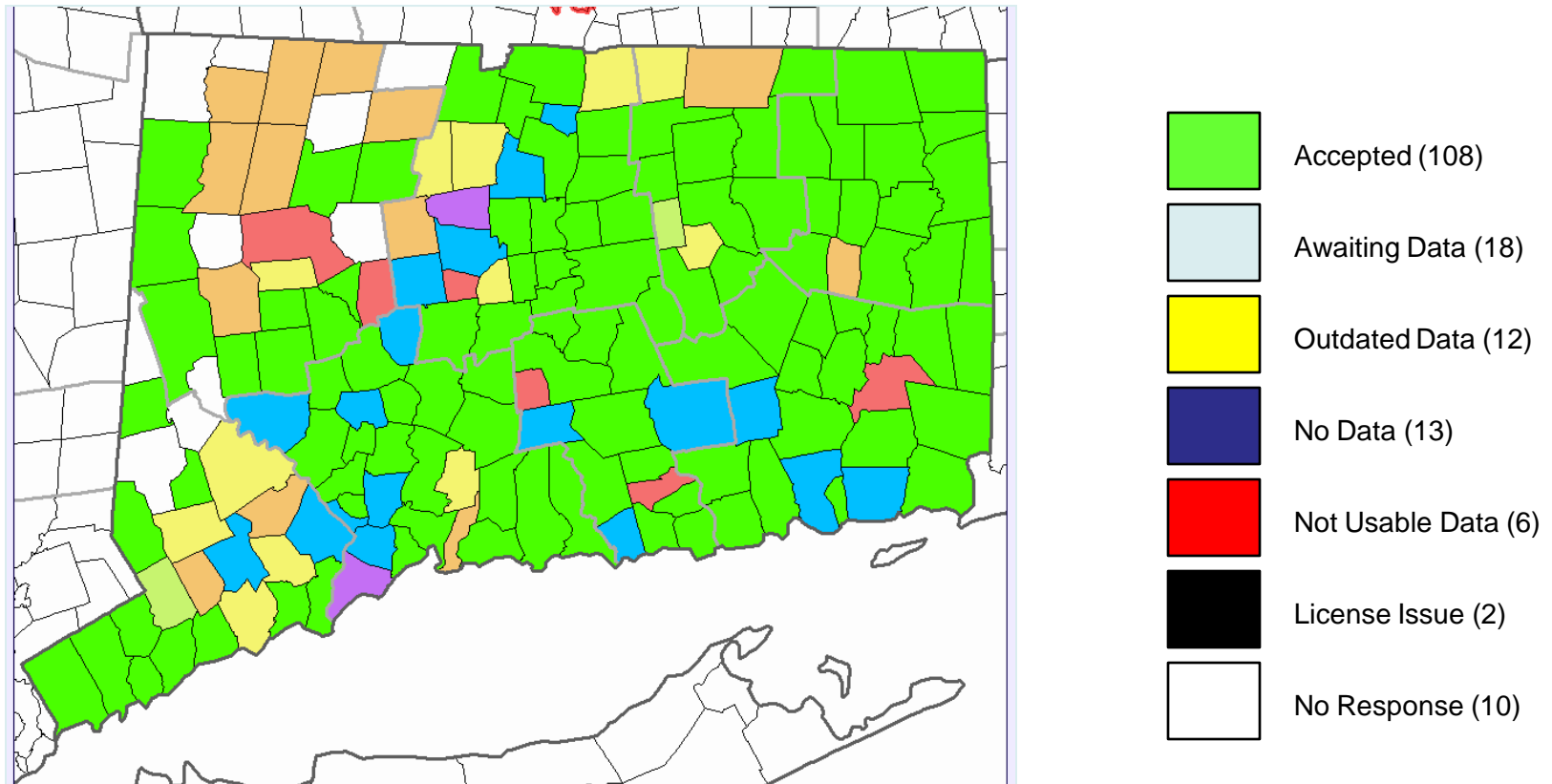
- Funded through Broadband Mapping Grant to DPUC
- Data collection :
 - Broadband providers
 - Community Anchor Institutions
 - Consumers broadband service
- Data aggregated into maps and standardized formats

Broadband Mapping Project:

- CT did not have a statewide parcel dataset
- Statewide parcel mapping required for our proposal
- Created standardized parcel dataset leveraging GIS Working Group standard and state grants as match
- Councils of Governments

Parcel Consolidation and Standardization

- Collect Existing Parcels
- Standardize Parcels to Draft State Standard
- No edgematching, updating, spatial adjustment or creation



Looking Ahead

- Statewide Orthophotography flight
- Completion of parcel dataset
- Clearinghouse populated

For additional information

- <http://www.ct.gov/GIS>



State of Connecticut

Search: Go

Connecticut Geospatial Information Systems Council

Home About Us Publications Contact Us

About CGISC
Council Members
Working Groups
Meetings and Events
Resources
Links
Presentations, Reports, and Papers
Education/Outreach Opportunities

Podcasts

Diane Wallace
Chairperson

Check the Calendar

Receive Updates by e-mail
@-ALERTS

Welcome to Geospatial Information Systems Council

How is GIS being used in Connecticut?

[State of Connecticut Geospatial Information Systems Council Annual Reports](#)
Submitted in Accordance with C.G.S. 11-4 (a) (powerpoint 460kb)

Latest News
Monday, September 27, 2010
[Geography Awareness Week](#)
Geography Awareness Week Kickoff Event

2010 Highlights

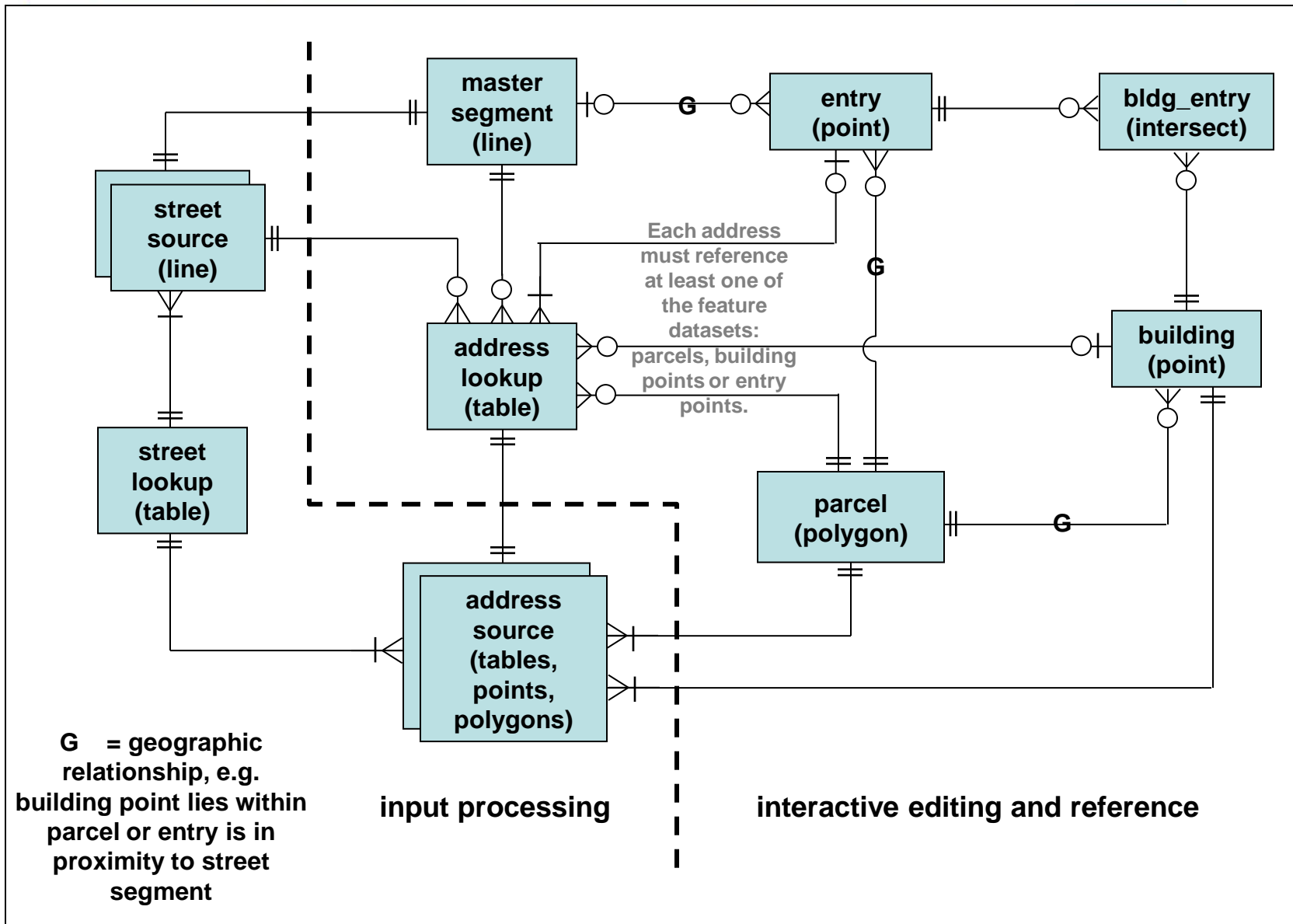
- Release of 2009 orthophoto
- MassGIS program move to ANF / ITD
- ITD procurements:
 - regional services
 - parcels from MSA
- Broadband mapping
- 911 geocoding at 99.6% of ESL
- Address “toolkit” to implement FGDC
- LiDAR project -- many partners
- DOT/EOPSS obliques on-line

2010 Highlights

- Release of 2009 orthophoto
- MassGIS program move to ANF / ITD
- ITD procurements:
 - regional services
 - parcels from MSA
- Broadband mapping
- 911 geocoding at 99.6% of ESL
- Address “toolkit” to implement FGDC
- LiDAR project -- many partners
- DOT/EOPSS obliques on-line

Project: Addresses

Massachusetts



Looking Ahead (catching up)

- MSDI built – how to maintain
- Bottom-up, top-down
 - Mobile data collection AEAP
 - More tech support & communication
 - Broadband as a GIS enabler
- Budget issues
 - Return On Investment
 - private v. public sector

For additional information

- MassGIS:
 - Christian.Jacqz@state.ma.us
 - Neil.MacGaffey@state.ma.us
 - <http://mass.gov/mgis>

2010 Highlights

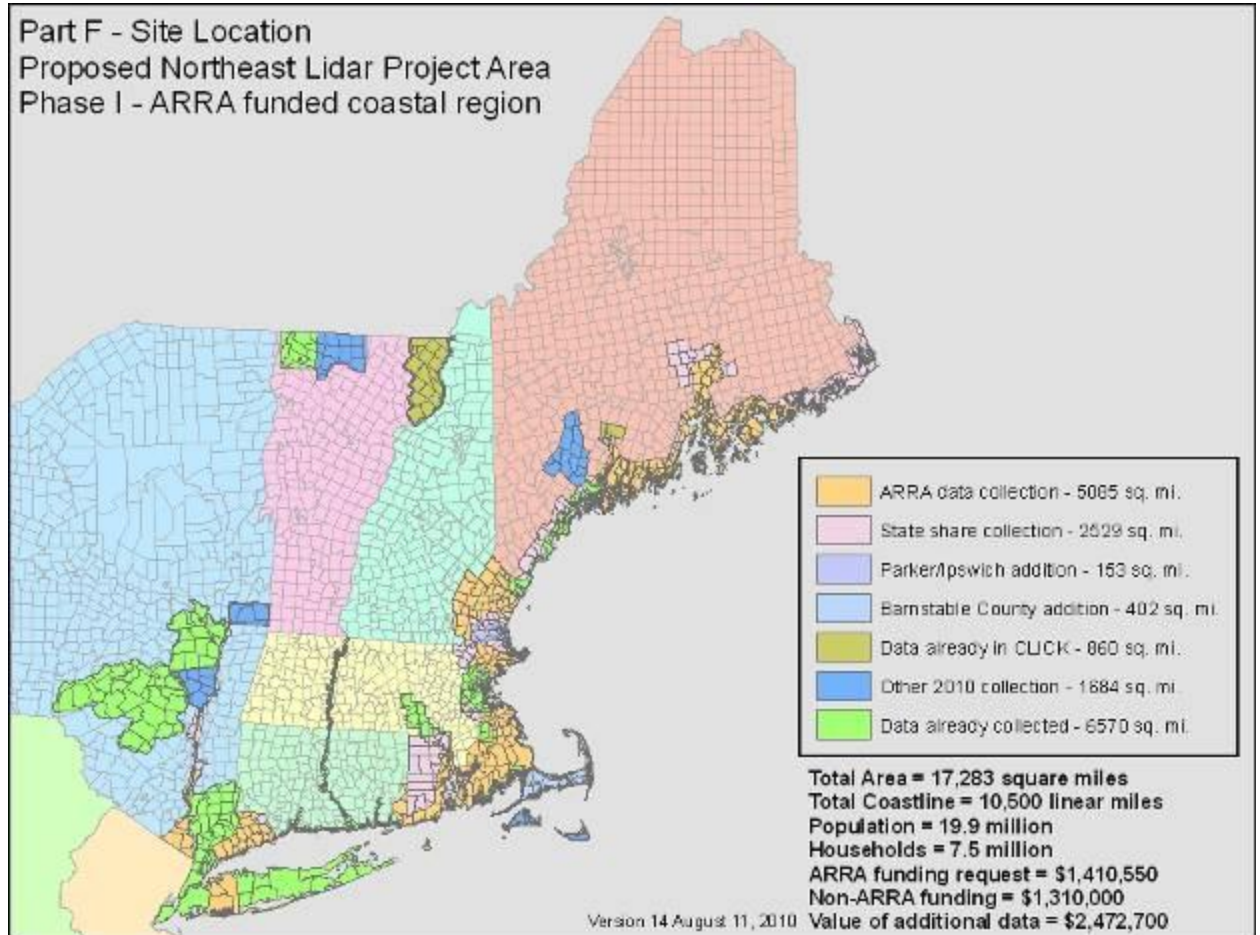
- Lidar for the Northeast
- Orthoimagery Program
- Broadband Mapping
- GeoParcels
- GeoPortal
- WMS for orthoimagery

Lidar for the Northeast:

Work Plan:

Total Project Area:
8,170 sq. miles

ME - 2,893 sq. mi
NH - 902 sq. mi
MA - 2,022 sq. mi
RI - 1,074 sq. mi
CT - 511 sq. mi
NY - 766 sq. mi



Lidar for the Northeast:

Financial Partners

States	Federal	Others
Maine	USGS- National & Local	Nature Conservancy
New Hampshire	NRCS- State & Regional	Maine Coast Heritage Trust
Massachusetts	FEMA	Maine Geolibrary
Rhode Island	US DOT	Maine DEP and Maine SPO
Connecticut	National Park Service	University of NH
New York		NH DES
		NY DEC
		NY Energy Research Dev. Authority

Lidar for the Northeast: Supporters

- EPA- Region 1
- US Fish & Wildlife
- NOAA CSC
- USDA NRCS
- NROC
- USGS
- National Park Service
- Nature Conservancy
- Passamaquoddy Tribe
- Governor Baldacci, Maine
- Governor Rell, Connecticut
- Maine CDC
- State CIO Thompson, Maine
- Maine Env'tl Protection
- Maine Marine Resources
- Maine Conservation
- Maine EMA
- Maine State Planning
- Maine GeoLibrary
- Greater Portland COG
- Cumberland County ME
- Portland Area Transit
- City of Ellsworth ME
- Town of Hampden ME
- Swan's Island ME
- Town of Windham ME
- Hancock County ME
- ME Building Inspectors
- ME Coast Heritage Trust
- Island Institute ME
- Friends of Casco Bay ME
- Wells Reserve ME
- ME GIS Users Group
- ME Real Estate Association
- ME Association of Realtors
- James W Sewall Co.
- Spatial Alternatives, Inc
- ME Assoc. of Community Banks
- Univ. of Maine
- Univ. of Southern Maine
- NH Env'tl Services
- NH Energy and Planning
- Univ. of New Hampshire
- Mass DOT
- Mass Energy and Env'tl Affairs
- Mass EMA
- Mass State Geologist
- City of Boston
- Old Colony Planning Council
- Southeast Regional Planning
- Metropolitan Boston Planning
- Mass Audubon
- Mass Rivers Alliance
- RI Planning Program
- RI DOT
- RI Coastal Resources Council
- RI Dept of Health
- RI Env'tl Management
- RI EMA
- RI Army Reserve/Nat. Guard
- Coastal Institute RI
- Univ. of RI
- NY Energy Research/Dev.
- NY Env'tl Conservation
- NY CSCIC
- Stormwater Coalition Albany Co.



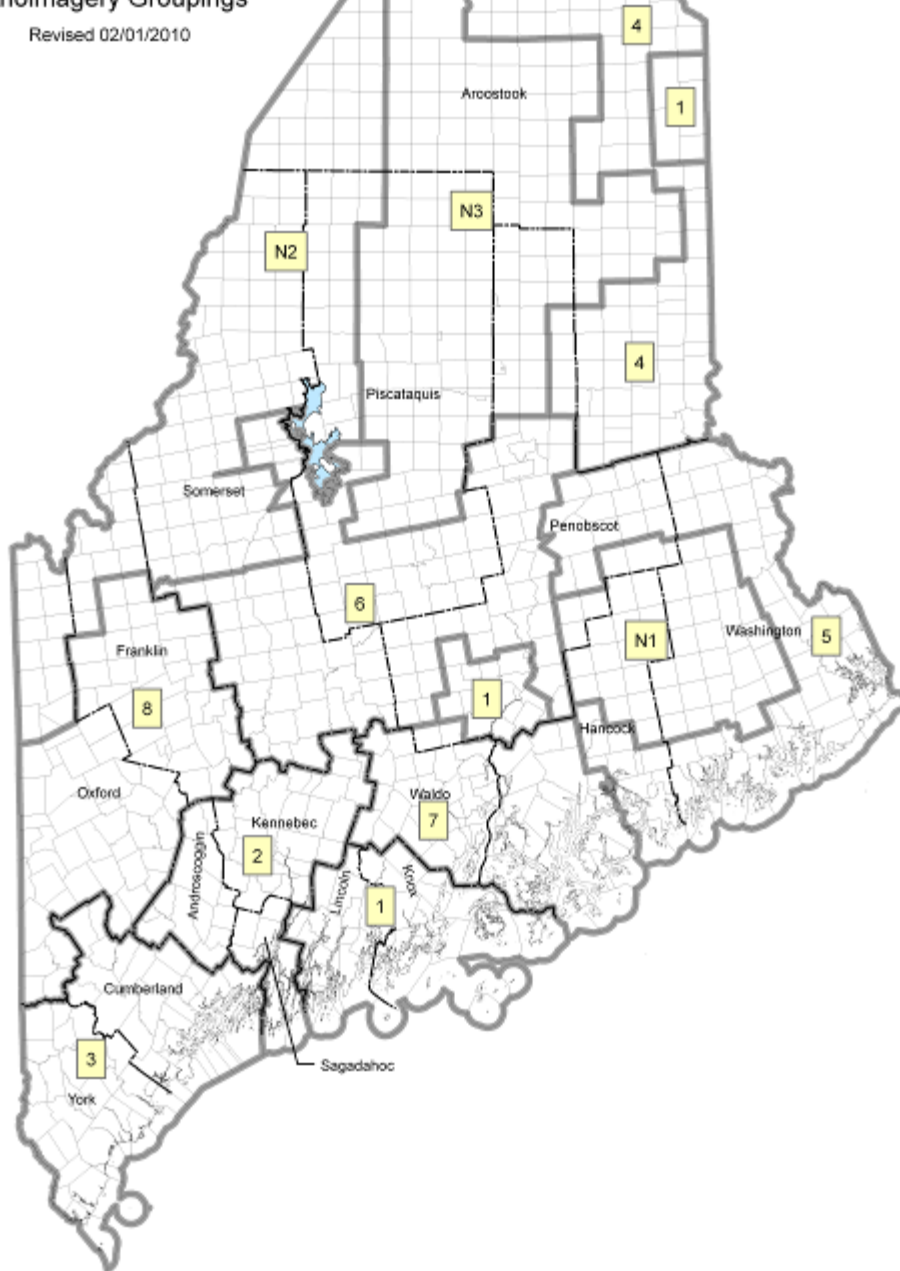
Orthoimagery Program

- Much like NSGIC Imagery for the Nation
- Base program
 - State divided into 11 town groupings
 - 3 and 5 year refresh cycle
 - 60 cm and 1 meter resolutions
- Buy-up options
 - Higher resolution
 - Horizontal control
 - Oblique



Overview of Counties and Orthoimagery Groupings

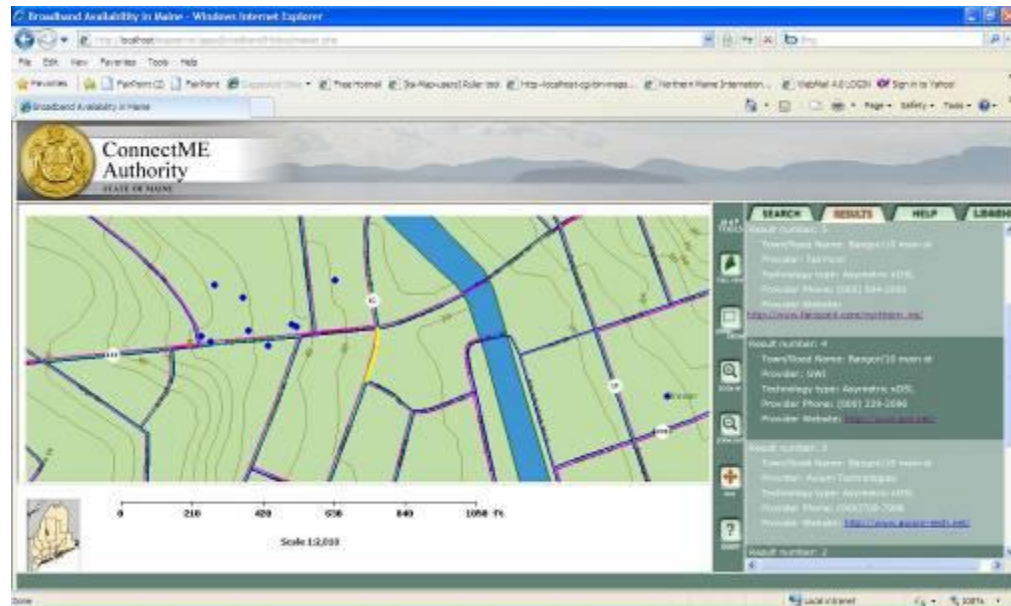
Revised 02/01/2010



- Published schedule
- Several groups/year
- 5 year contract
- \$450,000/year
- 2012 start date

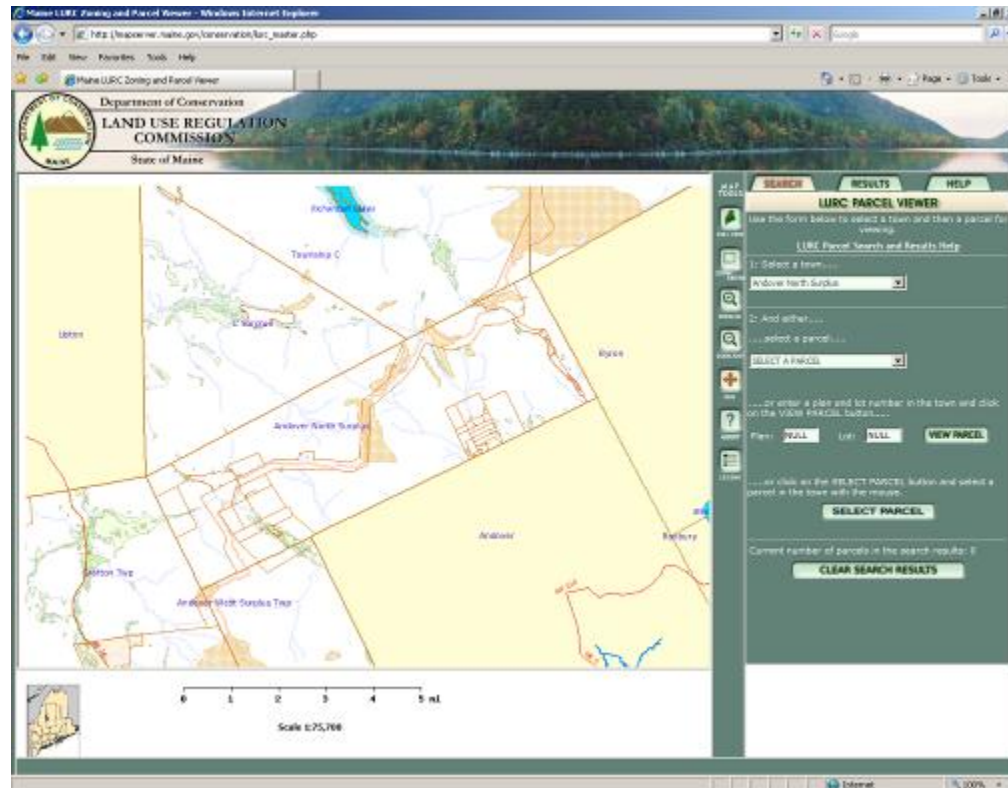
Broadband Mapping:

- \$3.5M total awarded to ConnectME Authority
- Work contracted to James W. Sewall
- Data will show address-level broadband availability, and a public online viewer to query availability and connect with providers
- \$200K for parcels and \$125K for roads data



GeoParcels:

- ILRIS specification is result of Cat 3
- GeoParcel pilot in Hancock Co. funded via Cat 4 grant.
- Result will be parcel composite + update process + viewer + links to other land record data.



GeoPortal:

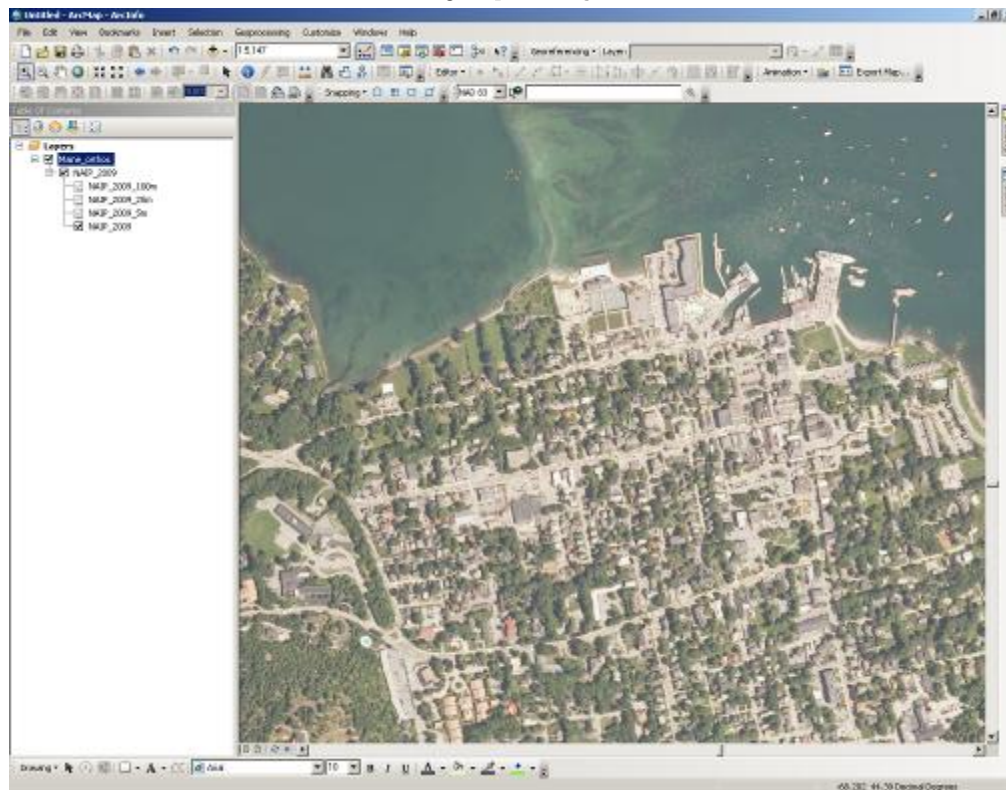
- State metadata portal, funded by GeoLibrary
- USGS funding to populate metadata
- Used by MEGIS to manage metadata
- Partnership with USM

The screenshot displays the Maine GeoPortal interface in a Windows Internet Explorer browser window. The page title is "GeoNetwork: The portal to spatial data and information". The URL is "http://geoportal.srs.maine.edu/geonetwork/srv/metadata.do?d=267". The page features a navigation menu on the left with sections for "METADATA", "BIBLIOGRAPHY", "GEOMETADATA", and "CONTACT US". The main content area shows "Identification Information" for a dataset titled "Maine Emergency Management Agency (MEMA), Maine Office of Geographic Information Systems (MEGIS)(cont.)".

Identification Information	
Citation Information	
Diagname	Maine Emergency Management Agency (MEMA), Maine Office of Geographic Information Systems (MEGIS)(cont.)
Publication Date	20030813
Publication Time	Unknown
Title	armories
Number	2
Resource Data Presentation Form	vector digital data
Series Name	Maine GIS
Issue Identification	SDE server: Internet Data Catalog
Publication Place	Augusta ME
Publisher	Maine Office of Geographic Information Systems (MEGIS)
Other Citation Details	1:24000
Online Linkage	http://www.maine.gov/ostia/
[Sincisinh]	true
[Sincisanc]	24000
[Sincisanc]	online
Calendar Date	20030813
Time Of Day	Unknown
[Sincisanc]	publication date
Abstract	ARMORIES shows point locations of Maine Army National Guard armories, mapped on a 1:24,000 base. The data was compiled on a 1:24,000 base, using USGS Digital Raster Graphics (DRGs). Also available on screen were up to date road names, address ranges and GPS collected addressing points coded for public building. The dataset is attributed with facility name, occupied status, mailing address, email address, and city or town name.
Purpose	This dataset was created for the Maine Emergency Management Agency as a digital location and database of armories, for tracking, analysis and emergency management applications. Data at this scale is suitable for detailed studies and local planning. Not recommended for use at scales greater than 1:24000.
Supplemental Information	Accurate placement was assisted greatly by using USGS Digital Raster Graphics (scanned and rectified topo sheets) because many armories were shown and labeled on the original USGS topo sheets.
Time Period of Content	
Calendar Date	20030813
Time Of Day	Unknown
Currentness Reference	publication date
Status	
Progress	Complete
Maintenance And Update Frequency	As needed
Bounding Coordinates	
West Bounding Coordinate	-75.77972
East Bounding Coordinate	-67.21059
South Bounding Coordinate	47.22620

WMS for imagery:

- Replaces Oracle/SDE environment with open-source MapServer/WMS
- Saves \$90-100K per year and doubles data offerings w/34 layers currently
- Joint MEGIS/GeoLibrary project



Looking Ahead

- Continued work with conflation of E911 and Maine DOT roads, to end up with single shared geometry
- Continued work developing statewide cadastral data and linking with other land records
- Continued development of statewide ortho and lidar programs
- Private/public partnerships for data maintenance

For additional information

- megis.maine.gov
- www.maine.gov/geolib

2010 Highlights

- 1 ft./6 in. aerial imagery (MA border to Conway)
- New floodplain mapping
- Broadband: Rural addressing, Community Anchor Institutions
- NH Wildlife Sightings website

Project:

- Mosaic Parcel Map
 - NH Department of Revenue Administration
 - Integrating existing municipal parcel data into GIS
 - 350,000 parcels to date (1/2 of parcels in state)
 - Programming commencing for property value equalization

Looking Ahead

- Revisiting interagency cooperation
 - Currently no state GIS Coordinator
 - Increased cooperation between Depts. of Transportation (TMC) and Safety (EOC)
 - NH National Guard – Enterprise GIS

For additional information

- NH GRANIT: www.granit.unh.edu
- Broadband mapping:
<http://iwantbroadbandnh.org/>
- NH Wildlife Sightings:
<http://nhwildlifesightings.unh.edu/>

2010 Highlights

- RIGIS Working Groups
 - Database Maintenance
 - Database Distribution
 - Standards
 - Outreach
- 5-Year Strategic Plan Update
- GIS Services Master Price Agreement
- RIGIS User Group Quarterly Meetings

Projects

- Sea Level Rise Analysis and Mapping
- Spring 2011 4-band Orthophotos
- RI E-911 Site Address Updating
- RI State Enterprise GIS Architecture
- North East LiDAR (NE LiDAR) USGS
- Municipal Status/Contacts Database

Looking Ahead

- RIGIS Funding Source(s)
- Data Layer Update Strategies
- Regular Oblique/Nadir Photo Updates
- Standardized Land Use Coding
- Statewide Parcels, Zoning
- WebEOC GIS Map Service Linking

For additional information

- RIGIS
 - Website (<http://edc.uri.edu/rigis>)
 - Google Calendar ([../about/calendar.html](http://edc.uri.edu/rigis/about/calendar.html))
 - Listserv (RIGIS-L@listserv.uri.edu)
 - Blog (<http://rigisnews.blogspot.com>)
 - Twitter (<http://twitter.com/RIGIS>)
 - LinkedIn (www.linkedin.com/in/shanewhitegis)
 - Email (swhite@doa.ri.gov)
 - Phone (401-222-6483)

2010 Highlights

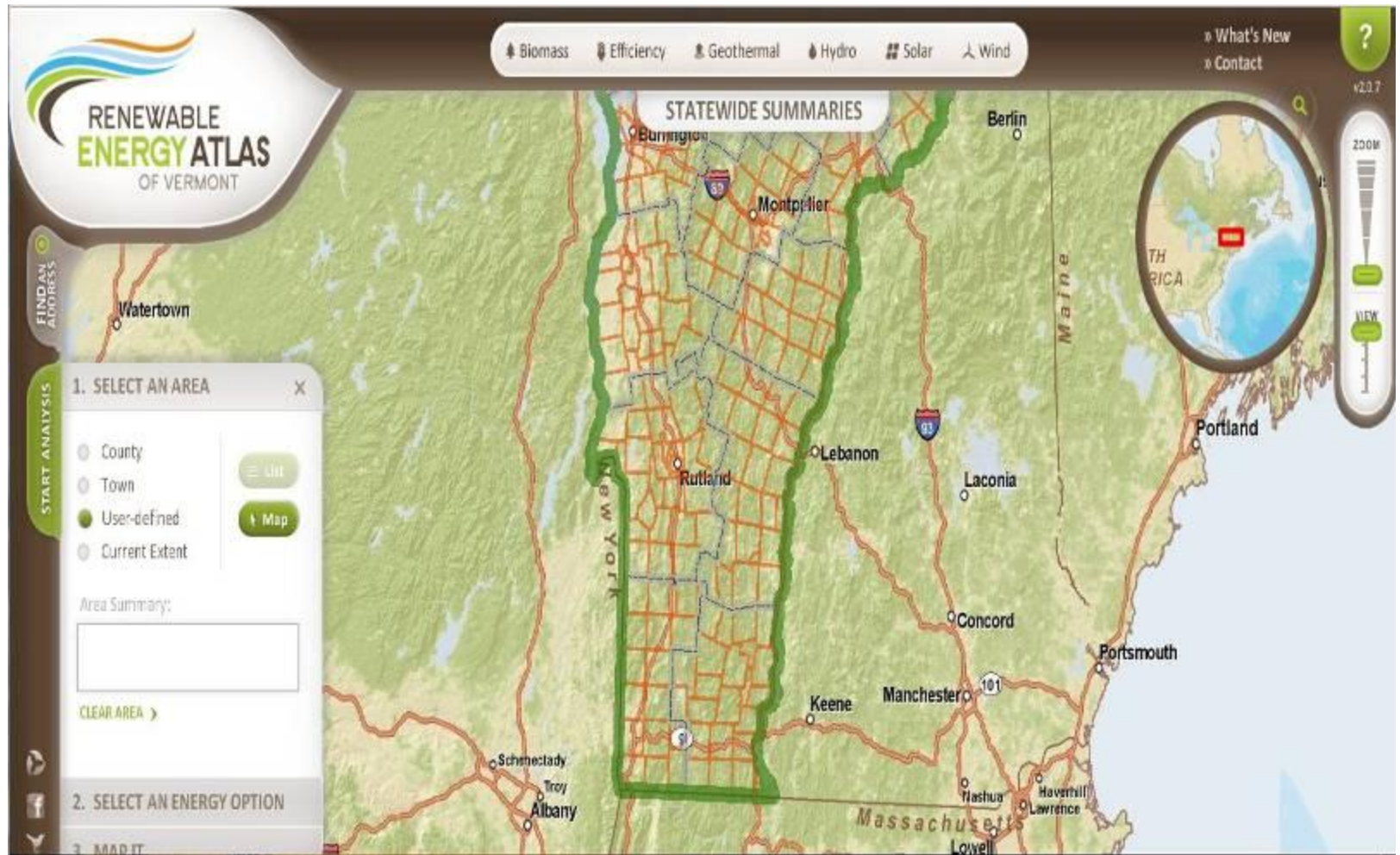
- NTIA Broadband Data Grant
 - Broadband Provider Coverage in VT
- Enterprise Geospatial Consortium(EGC)
 - State Agency Geospatial Enterprise Support
 - Services Development and Coordination
- Cached Imagery Services
 - Statewide – Color – B/W
- Town and Teacher GIS Training
 - GIS Fundamentals
 - NH Extension Service

Projects

- VT Renewable Energy Atlas
 - Tool for Identifying, Analyzing, and Visualizing Existing and Promising Locations for Renewable Energy Projects
 - VT Sustainable Jobs Fund – Creator/Funder
 - VCGI - Data Aggregation and Decision Design
 - Fountains Spatial & Overit Media – Developer/Designer

VT Renewable Energy Atlas

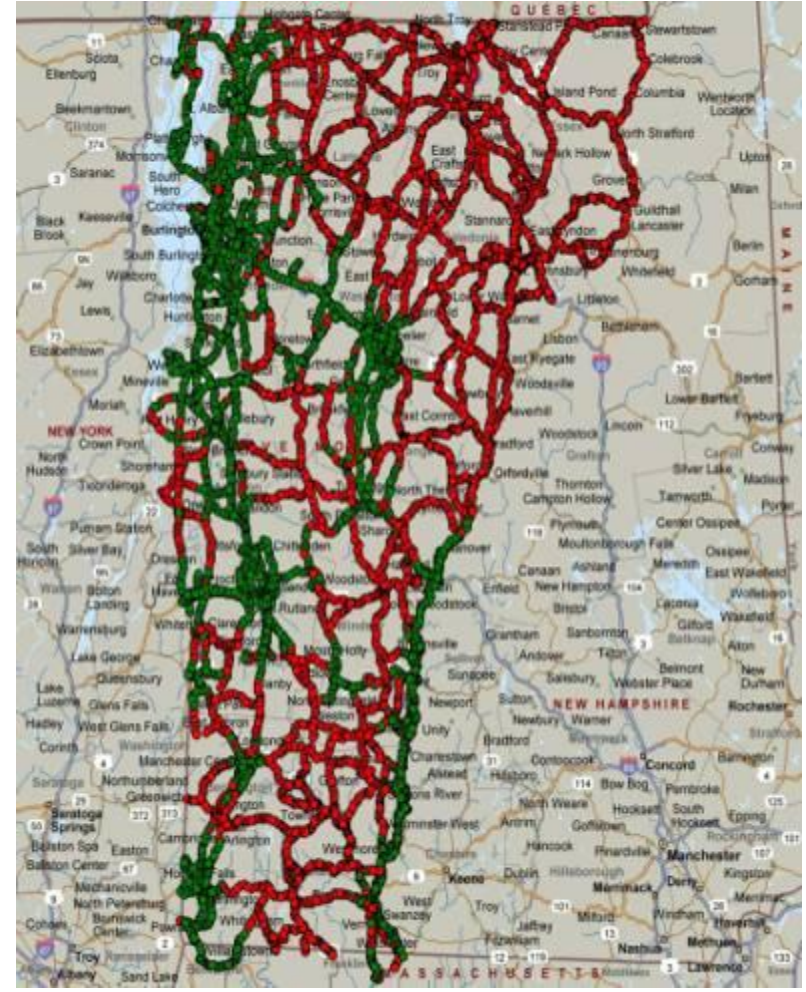
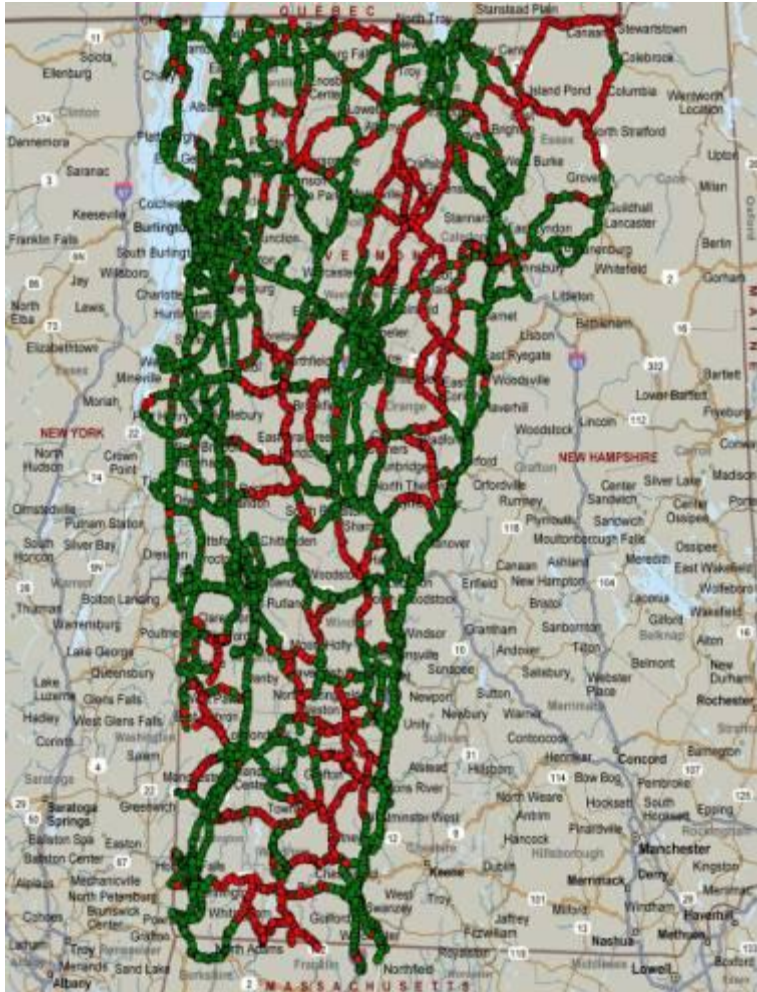
Vermont



www.vsjf.org/resources/renewable-energy-atlas

NTIA Broadband Data Grant

Vermont



Drive Testing Examples

Looking Ahead

- Next Generation of Statewide Orthos
 - RFP out soon
 - Higher resolution, color, leaf-off
- Upgrade Website
- LiDAR
- Public – Private Partnerships
- Cloud Based Storage – Services
- Archiving Data

For additional information

- VCGI
 - www.vcgi.org
- Broadband Mapping Project – VT
 - www.vcgi.org/projects/bmi
- Enterprise Geospatial Consortium(EGC)
 - www.vcgi.org/projects/egc
- Cached Imagery
 - Select the Data tab, then select Imagery